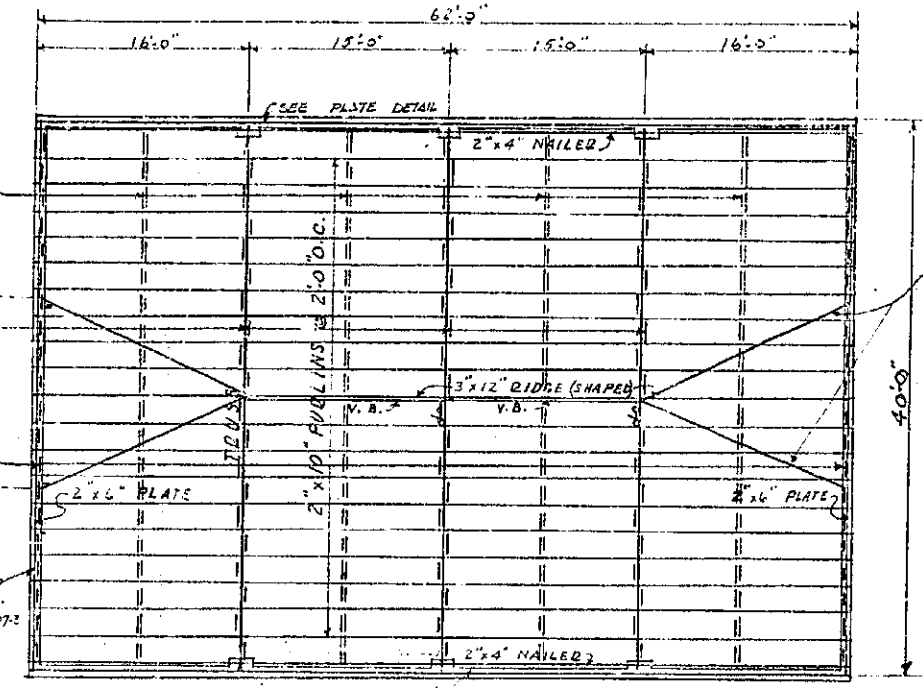


**TRUSS DETAIL**  
SCALE: 3/4" = 1'-0"



**ROOF FRAMING PLAN**  
SCALE: 1/8" = 1'-0"

**GENERAL NOTES (ALL SHEETS INC OFF 100)**

- 1-STRUCTURAL DRAWINGS SHALL BE USED IN CONJUNCTION WITH ARCHITECTURAL DRAWINGS & SPECIFICATIONS.
- 2-FOUNDINGS SHALL BE PLACED ON A FOUNDATION MATERIAL HAVING A MINIMUM VALUE OF 5000' PER SQ. FT.

**CONCRETE NOTES**

- 1- SLABS ON GROUND SHALL BE POURED IN ALTERNATE BAYS NOT EXCEEDING 4 FEET 1200 SQ. FT. IN AREA.
- 2- PROVIDE 1/2" MASTIC JOINT BETWEEN ALL SLABS ON GROUND & VERTICAL SURFACES.
- EXCEPT AT MASTIC JOINTS.
- 4- CONSTRUCTION JOINTS SHALL BE MADE DOUGH AFTER ALL LANTANCE HAS BEEN REMOVED FROM THE SURFACE.
- 5- ALL DIMENSIONS SHOWN FOR LOCATION OF REIN. STEEL ARE TO FACE OF BAR & DENOTE CLEAR COVERAGE FOR BEAMS & TIED COL'S. DIMENSIONS ARE TO MAIN BARS, UNLESS SPECIFICALLY NOTED. COVERAGE SHALL BE AS FOLLOWS:
  - 4" WHERE CONG. IS DEPOSITED DIRECTLY AGAINST GROUND.
  - 3" " " IS EXPOSED TO GROUND BUT PLACED IN FORMS.
  - 2" FOR MAIN BARS OF TIED COL'S.
  - 1 1/2" FOR BARS OF BEAMS.
  - 1 1/2" FOR WALL BARS.
- 6- UNLESS OTHERWISE SHOWN, SPLICES IN CONT. REIN. SHALL BE A LAP OF 40 BAR DIA. BOTTOM & OUTSIDE OVER SUPPORT & TOP & INSIDE AT MID SPAN.

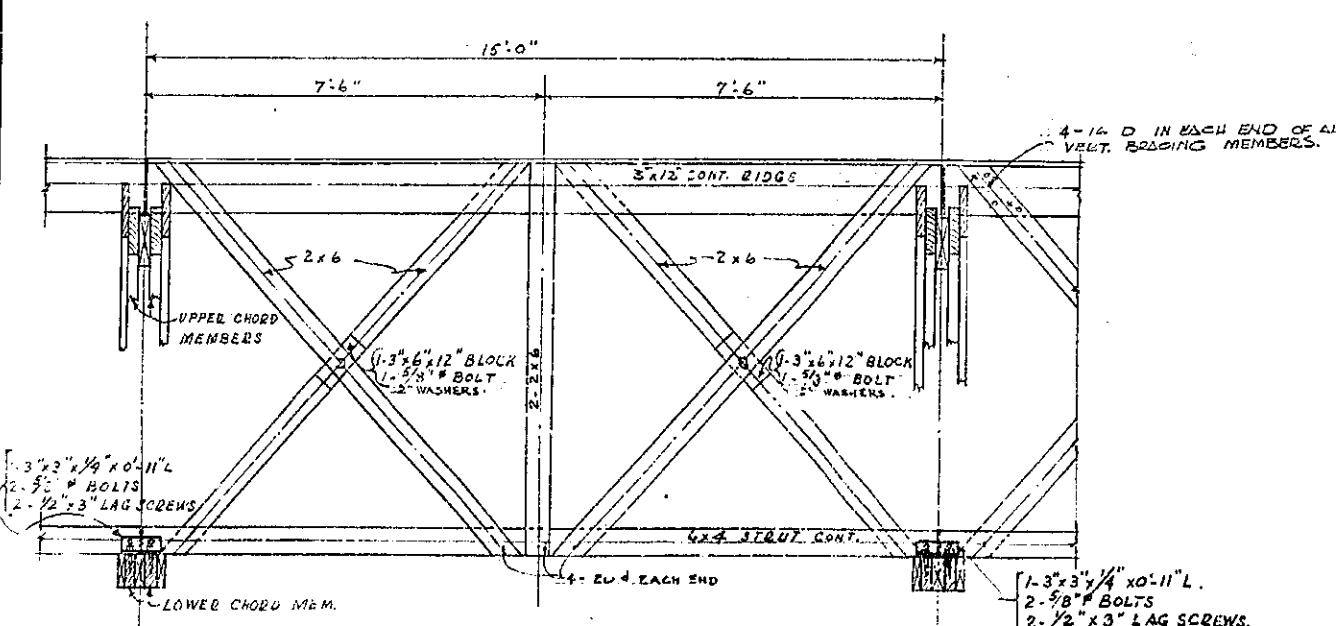
**TIMBER NOTES**

- 1- WOOD PLATES & SILL PLATES SHALL BE BEDDED IN GROUT & BOLTED TO SUPPORTING MEMBERS WITH 3/8" DIA. BOLTS SPACED NOT MORE THAN 2'-0" O.C. WITH A BOLT WITH 3" OF END OF ANY PIECE. STANDARD M. I. WASHERS OR 2 1/2" x 2 1/4" x 1/4" STEEL PLATE WASHERS SHALL BE PROVIDED UNDER NUTS.
- 2- NO STRUCTURAL MEMBERS SHALL BE CUT FOR PIPES, ETC., UNLESS SPECIFICALLY SHOWN OR NOTED.
- 3- JOISTS SHALL BE SPLICED AT SUPPORTS ONLY. SPLICES SHALL BE A LAP OF JOISTS NOT LESS THAN 1'-0" WITH 4-16D NAILS FOR DEPTHS UP TO 8" & 1-16D NAIL ADDITIONAL FOR EACH 4" INCREASE IN DEPTH OF JOIST OVER 8".
- 4- 2" SOLID BLOCK SHALL BE PLACED BETWEEN JOISTS AT ALL SUPPORTS AND UNDER ALL PARTITIONS.
- 5- WOOD CROSS BRIDGING NOT LESS THAN 1 1/2" NOMINAL SHALL BE PLACED BETWEEN JOISTS WHERE THE JOIST SPAN EXCEEDS 8'-0". THE DISTANCE BETWEEN LINES OF BRIDGING OR BETWEEN BRIDGING & WALL SHALL NOT EXCEED 8'-0".
- 6- DIAG. SHTS. SHALL BE PLACED 45° TO SUPPORTS. SHIC. BOARDS SHALL PREFERABLY BE IN SINGLE LENGTHS WHERE SPLICING IS NECESSARY. SPLICES FOR DIAG. SHIC. SHALL BE SO PLACED THAT THERE WILL BE AT LEAST TWO BARDS BETWEEN SPLICES ON THE SHIC. BEARING AND AT LEAST ONE BEARING BETWEEN SPLICES OF ADJOINING BARDS. NO BARDS SHALL BE LESS THAN 3' JOISTS OR STD. SPACES IN LENGTH.
- 7- HOLES FOR BOLTS SHALL BE BORED WITH A BIT OF THE SAME NOMINAL DIA. AS THE BOLT EXCEPT WHERE TIMBER CONNECTORS ARE USED. WHERE TIMBER CONNECTORS ARE USED HOLE MAY BE 1/16" LARGER DIA. THAN BOLT.
- 8- ALL BOLTS & LAG SCREWS SHALL BE PROVIDED WITH WASHERS UNDER HEADS & NUTS WHICH BEAR ON WOOD. STANDARD CUT WASHERS SHALL BE USED EXCEPT ON BOLTS WITH TIMBER CONNECTORS. BOLTS THRU TIMBER CONNECTORS SHALL HAVE WASHERS OF SIZE & KIND RECOMMENDED BY NAT. LUMBER MFG. ASSOCIATION.
- 9- LAG SCREWS SHALL BE SCREWED NOT DRIVEN INTO PLACE. HOLES SHALL BE BORED FIRST TO LINE DIA. & DEPT. AS SHOWN. HOLES FOR THROUGH PORTION OF TEEWEE SHALL BE BORED WITH A BIT NOT LARGER THAN SIZE OF THROUGH. (CONT. BELOW 'NAIL SCHEDULE')

MINIMUM NAILING SCHEDULE	
DESCRIPTION	NAILS
JOISTS OR RAFTERS TO SIDES OF STUDS - 8" JOISTS OR LESS FOR EACH ADDITIONAL 4" OF SECTION THEREOF, IN JOIST HEIGHT.	3-16d
JOISTS OR RAFTERS FOR ALL BEARINGS TOE NAILS EACH SIDE	2-10d
STUDS TO BEARINGS TOE NAILS EACH SIDE	2-10d
BLOCKING BETWEEN JOISTS OR RAFTERS TO JOISTS OR RAFTER BEARINGS TOE NAIL EACH SIDE	2-10d
WEATHERING AT ALL BEARINGS 1" x 6"	2-8d
WEATHERING AT ALL ENDS 1" x 6"	3-8d
CROSS BRIDGING BETWEEN JOISTS OR RAFTERS TOE NAILS EACH END	2-8d
DISSONS TO STUDS 1" DISSONS	2-8d
2" DISSONS	2-10d
DOUBLE TOP PLATES LOWER PLATE TO TOP OF STUD UPPER PLATE TO LOWER PLATE	2-20d
MULTIPLE STUDS - STAGGERED	16d @ 12"
BUILT UP BEAMS - STAGGERED	16d @ 12"
DOUBLE JOISTS UNDER PARTITIONS WHERE NOT BLOCKED APART - STAGGERED WHERE BLOCKED APART AT EACH BLOCK	16d @ 12" 2-20d

**TIMBER NOTES, (CONT)**

- 10- MEMBERS WITH DAMAGED S.R. CORES SHALL BE REMOVED FROM WORK.
- 11- S.R. NOTED ON THE TRUSS DETAILS REFERS TO SPLIT RINGS AS MANUFACTURED BY TIMBER ENGINEERS COMPANY.



**TYPICAL VERTICAL BRACING**  
SCALE: 1/2" = 1'-0"

U. S. ENGINEER OFFICE, SALT LAKE CITY DISTRICT  
 OGDEN ARSENAL - OGDEN, UTAH  
 SHELL LOADING AREA  
 LUNCH HOUSE  
 TRUSS & FRAMING DETAILS

SCALE: AS NOTED IN SHEETS SHEET NO.:  
 GRAPHIC SCALE: DATE: JUNE 9, 1942

SUBMITTED BY: [Signature]  
 APPROVED BY: [Signature]  
 TO ACCOMPANY SPECIFICATIONS  
 DRAWN BY: [Signature]  
 CHECKED BY: [Signature]  
 TRACED BY: [Signature]

007-6