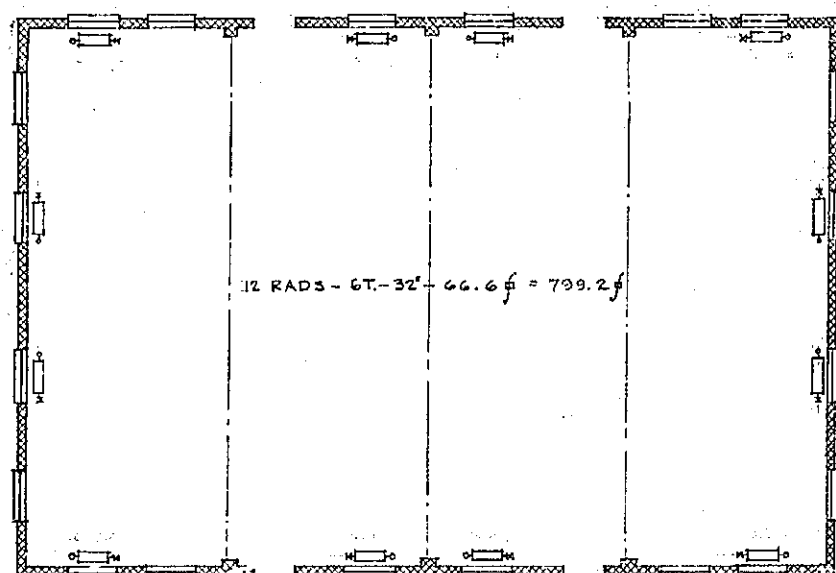
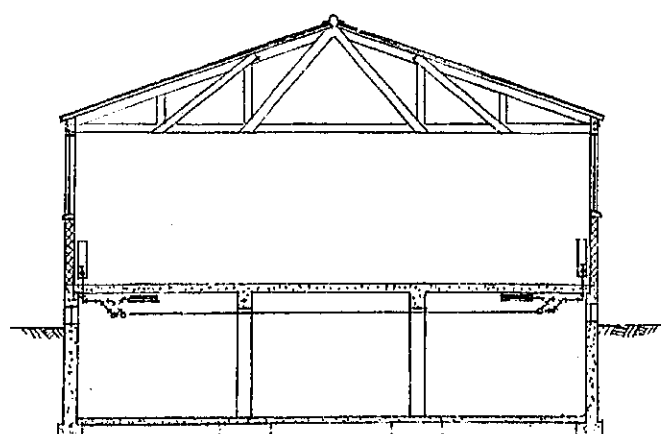


BASEMENT PLAN
1/8" = 1'-0"

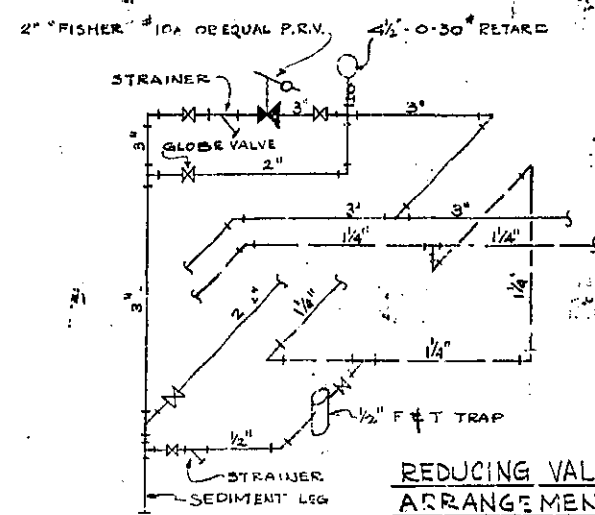


MAIN FLOOR PLAN

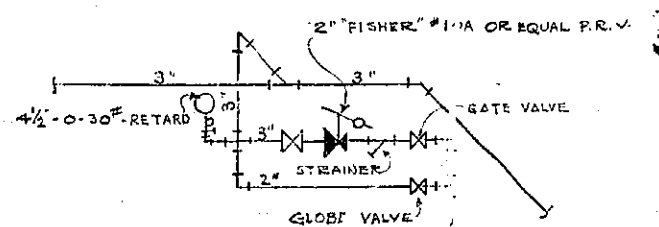


SECTION "B-B"
1/8" = 1'-0"

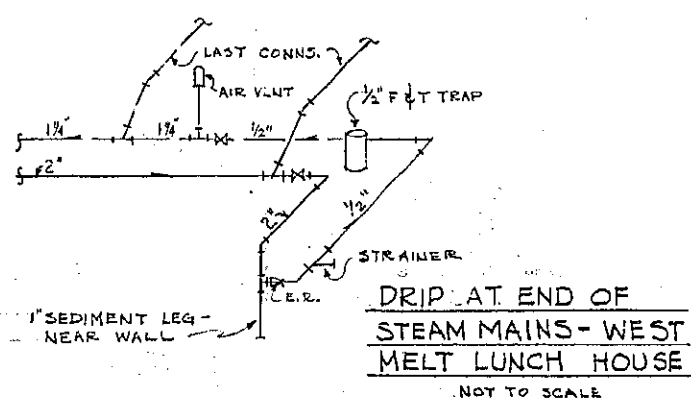
WEST MELT LINE LUNCH HOUSE



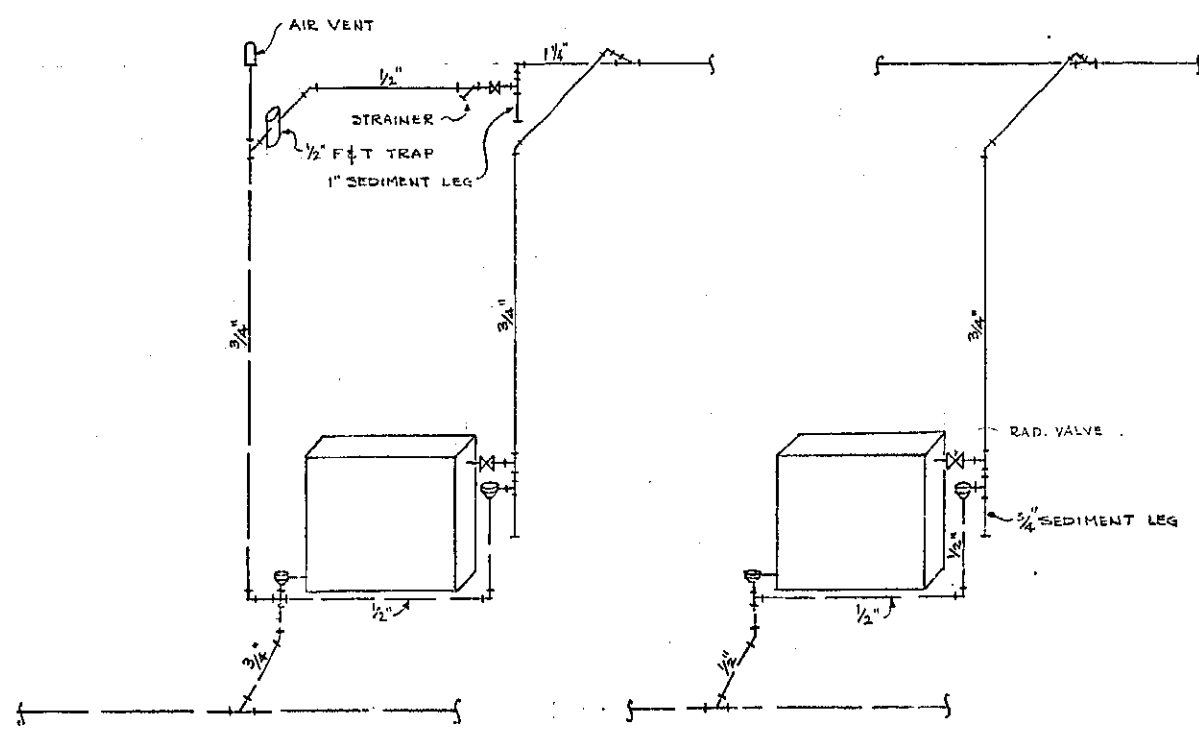
REDUCING VALVE
ARRANGEMENT
DEIP-WEST MELT
LUNCH HOUSE
NOT TO SCALE



REDUCING VALVE
ARRANGEMENT-EAST
MELT LUNCH HOUSE
NOT TO SCALE

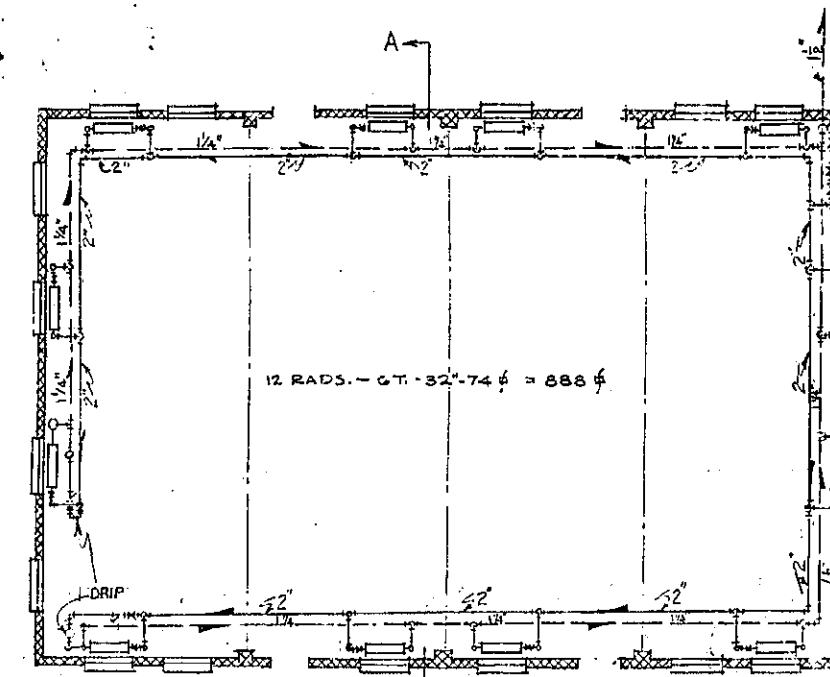


DRIP AT END OF
STEAM MAINS - WEST
MELT LUNCH HOUSE
NOT TO SCALE

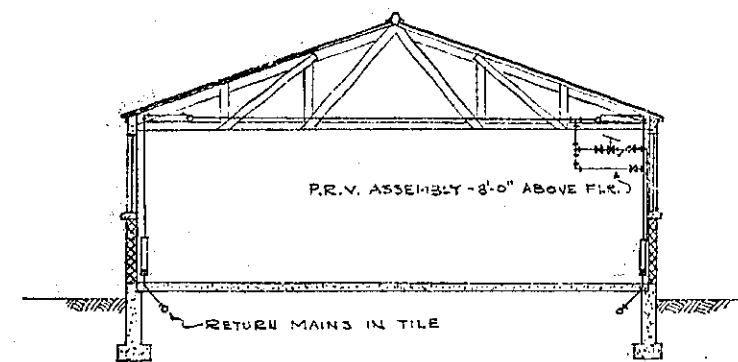


DRIP DETAILS AT END OF STEAM
MAINS - EAST MELT LUNCH HOUSE
NOT TO SCALE

TYPICAL DOWNFEED RADIATOR
CONN. - EAST MELT LUNCH HOUSE
NOT TO SCALE



PLAN
1/8" = 1'-0"



SECTION "AA"
1/8" = 1'-0"

EAST MELT LINE LUNCH HOUSE

ALL RADIATOR VALVES 3/4" - PACKLESS TYPE.
 ALL STEAM & CONDENSATE PIPING WITHIN BUILDINGS TO BE UNINSULATED.
 ALL VALVES (EXCEPT RADIATOR VALVES) TO BE GATE TYPE UNLESS OTHERWISE NOTED.
 ALL RADIATORS (EXCEPT CEILING RADIATORS) TO BE WALL HUNG, WITH "CURTIS" OR EQUAL HANGERS.
 VENT VALVES IN RETURN LINES TO BE 1/2" "DOL" #5 OR EQUAL.
 ALL MAINS TO BE PITCHED 1/4" IN 10'-0" MIN. - DIRECTION AS SHOWN BY ARROWS.
 USE ECCENTRIC REDUCERS FOR ALL REDUCTIONS IN PIPE SIZES, WHERE PIPE IS HORIZONTAL & REDUCTION IS MADE IN DIRECTION OF DRAINAGE.

U. S. ENGINEER OFFICE, SALT LAKE CITY DISTRICT			
OGDEN ARSENAL - OGDEN, UTAH			
SHELL LOADING AREA			
LUNCH HOUSE 3			
HEATING PLANS & DETAILS			
SCALE: AS NOTED	IN SHEETS SHEET NO.:		
GRAPHIC SCALE:	DATE: JUNE, 1942		
SUBMITTED BY:	APPROVED BY:		
<i>B. Bennett</i>	<i>E. O. Shuman</i>		
TO ACCOMPANY SPECIFICATIONS	DRAWN BY:	CHECKED BY:	PLAN NO.:
	<i>W. B. [unclear]</i>	<i>[unclear]</i>	007-7
DATED:	TRACED BY:		