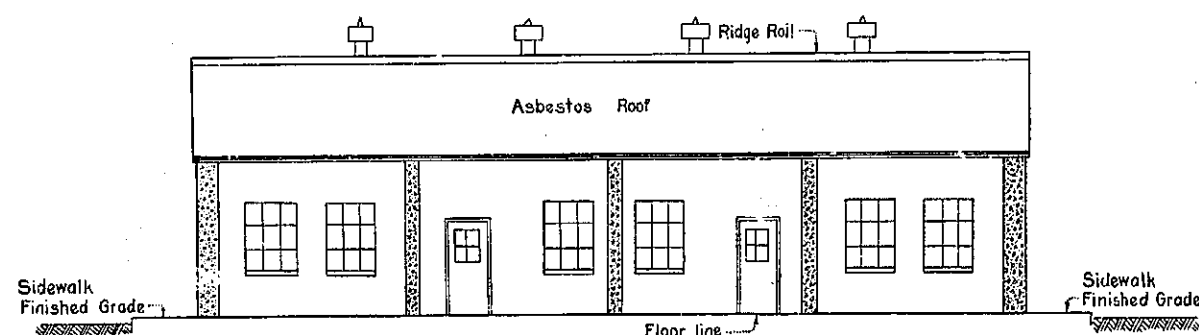


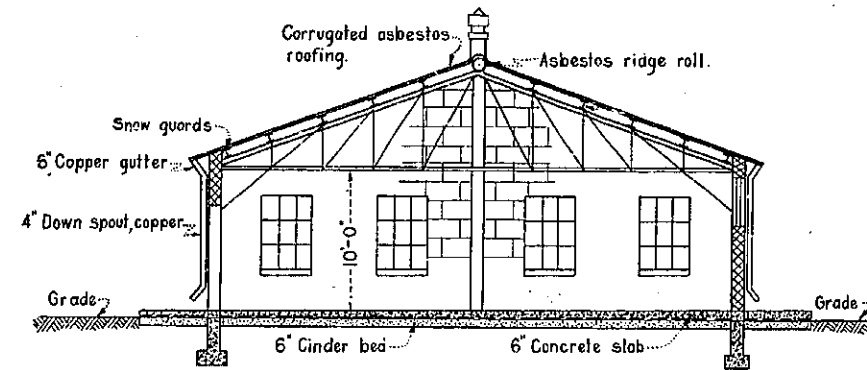
FLOOR PLAN
LUNCH ROOM

LEGEND

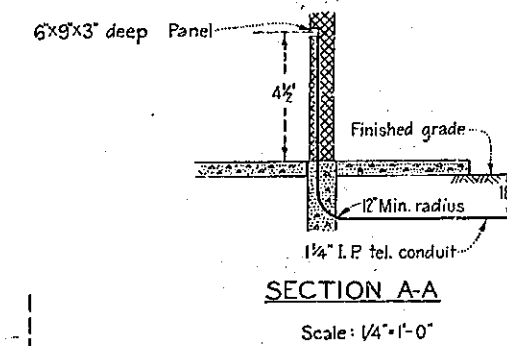
- Convenience outlet, wall
- Convenience outlet, floor
- Lighting fixture (all types)
- S Switch
- ▲ Telephone outlet
- ▭ Radiator
- D.F. Drinking fountain
- W.B. Wash basin



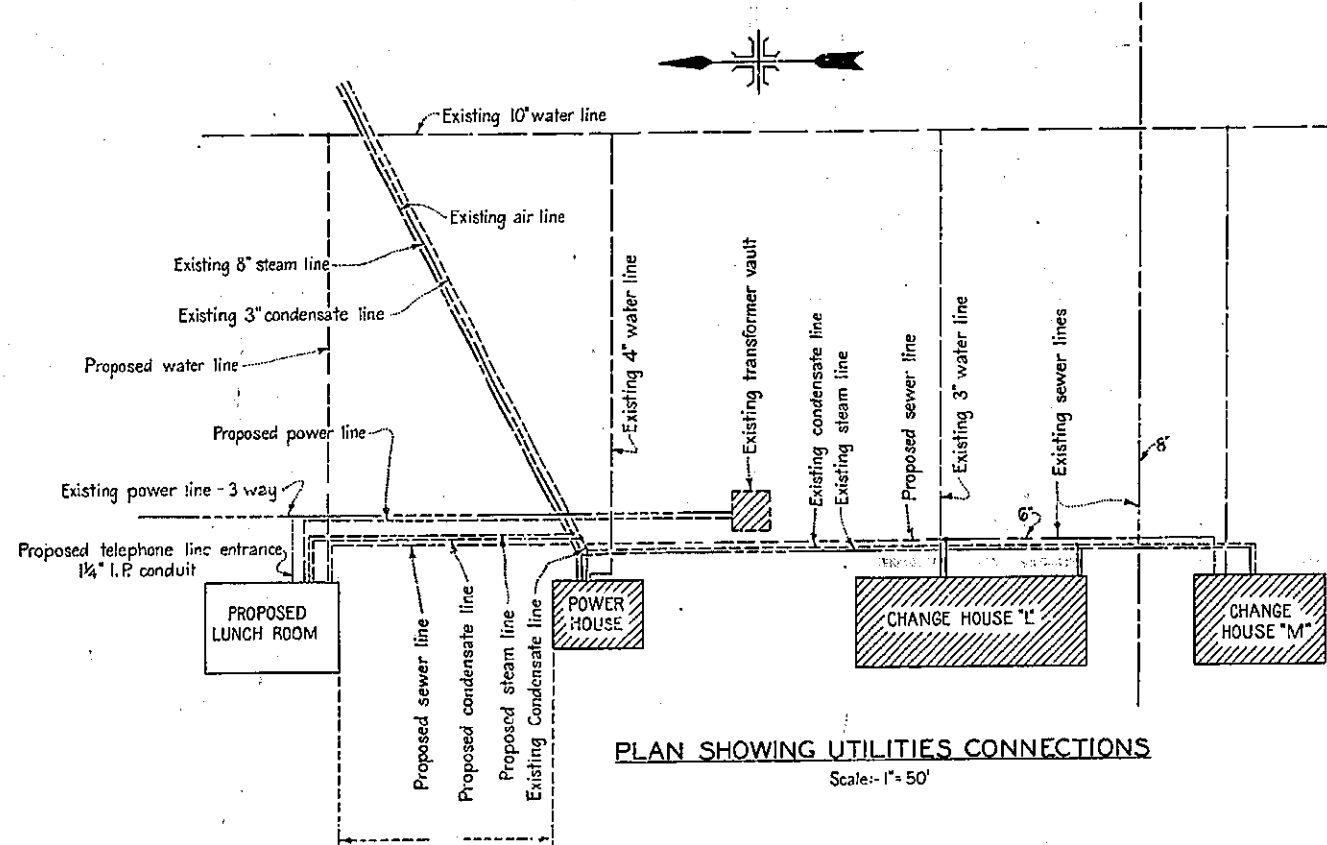
ELEVATION



TYPICAL SECTION



SECTION A-A
Scale: 1/4"=1'-0"



PLAN SHOWING UTILITIES CONNECTIONS
Scale: 1"=50'

NOTES

Building to be same as type M change house. See Dwg 4.1-D-98
Windows, Steel, Commercial outvent projected type (14" x 20" glass)
Roof, Corrugated asbestos.
Concrete - 1:2:4 Mix.
All reinforcements shall be placed so that the centers of bars in the outer layer will be 2" from face of concrete unless otherwise shown.

MATERIALS

Excavation, all classes - 192 Cu Yd.
Reinforcing Steel 1/2" bars - 5200 Lbs.
Structural Steel - 3250 Lbs.
Hollow Tile - 2100 Sq ft.
Asbestos Roofing - 2100 Sq ft.
Concrete - 110 Cu Yds.
173 Bbls. - Portland Cement
49 Yds. - Sand
97 Yds. - Gravel

REVISIONS:

1. Title revised. Utilities, location plan & section A-A added.
2. Telephone panel size changed to 6"x9"x3".

REVISIONS		PROPOSED LUNCH ROOM HOUSE FOR EAST 37 M.M. LOAD PLANT		
1.	5-5-42			
2.	5-15-42			
DRG PERTAINS TO		DPT SMAN	TRACER	ENGINEER
		W.L.S.	J.A.R.	J.E.S.
		CHECKER	CHECKER	DATE
				3-30-42
SUBMITTED:-		Robert B. Allen		
		LT. ORD. DEPT. U.S.A.		
EXAMINED:-		E.P. Chittie		
		CAPT. ORD. DEPT. U.S.A.		
APPROVED:-		[Signature]		
		BRIG. GEN., U.S.A. RET.		
4.4-D-306		OGDEN ORDNANCE DEPOT		

SCALE 1/8" = 1'-0"