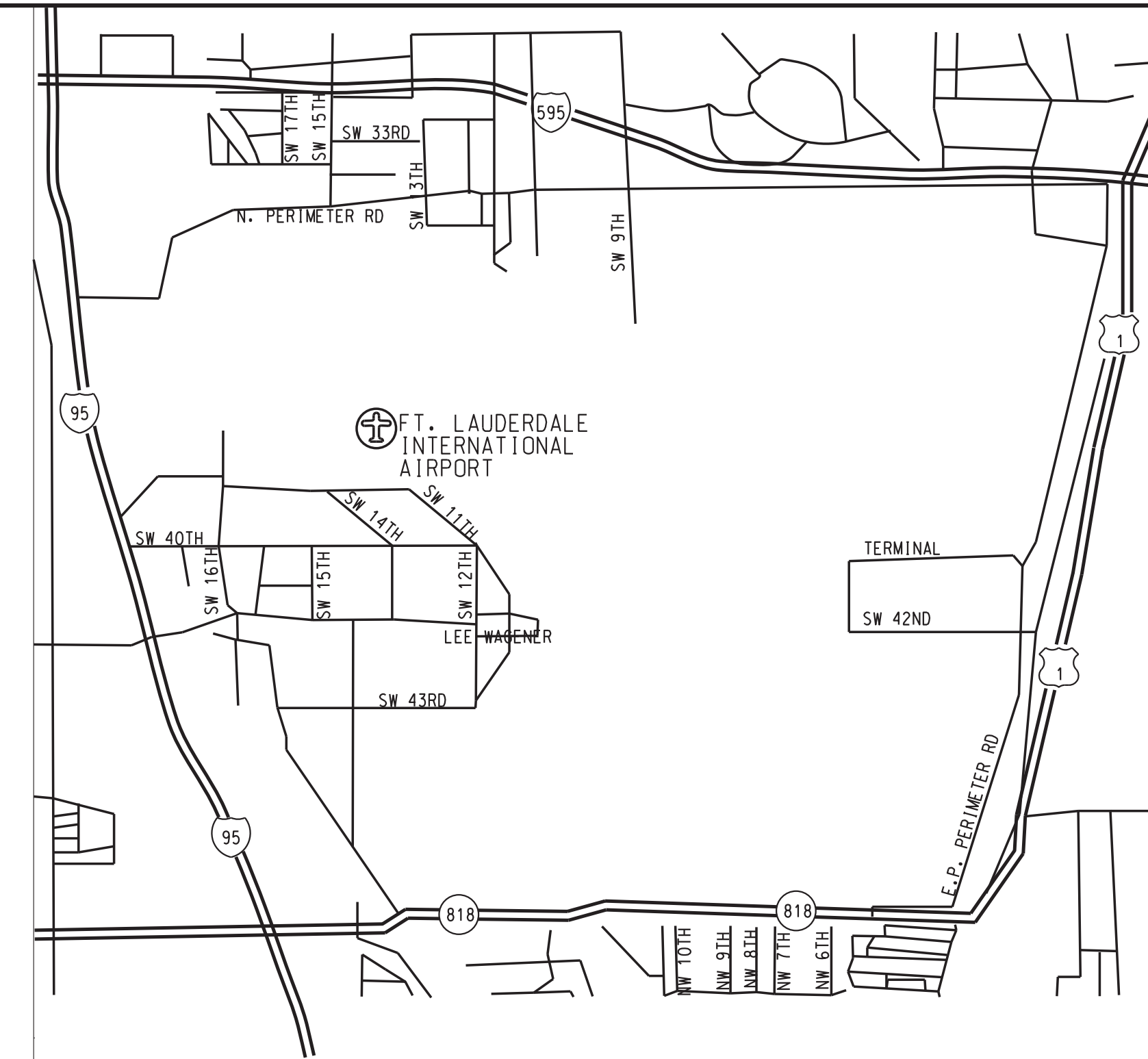




LIGHTING REPLACEMENT PROJECT FLL ATCT - FORT LAUDERDALE, FL



VICINITY MAP
NOT TO SCALE

REV	APPROVED DATE	DESCRIPTION	JCN	REDLINE DATE	APVD
DEPARTMENT OF TRANSPORTATION FEDERAL AVIATION ADMINISTRATION ATO - TECHNICAL OPERATIONS EASTERN SERVICE AREA ATCT LIGHTING REPLACEMENT PROJECT COVER SHEET					
FT LAUDERDALE FORT LAUDERDALE/HOLLYWOOD INTL AIRPORT FL					
REVIEWED BY	SUBMITTED BY		APPROVED BY		
	<i>DM</i>		<i>CP</i>		
PROJECT ENGINEER	DESIGNED	DRAWN	CHECKED	ISSUED BY	MGR: ENGINEERING CENTER
DM	DM	DM	CN	ENGINEERING SERVICES TERMINAL	DATE: 05/29/2020 JCN: 1507980
				DRAWING NO	REV
				FLL-D-1507980-G001	

FLL-D-1507980-G001.dgn
 05/29/2020 2:14:17 PM
 David Manno

ISSUED FOR: CONSTRUCTION
 EDW: FLL-D-1507980-G001.dgn

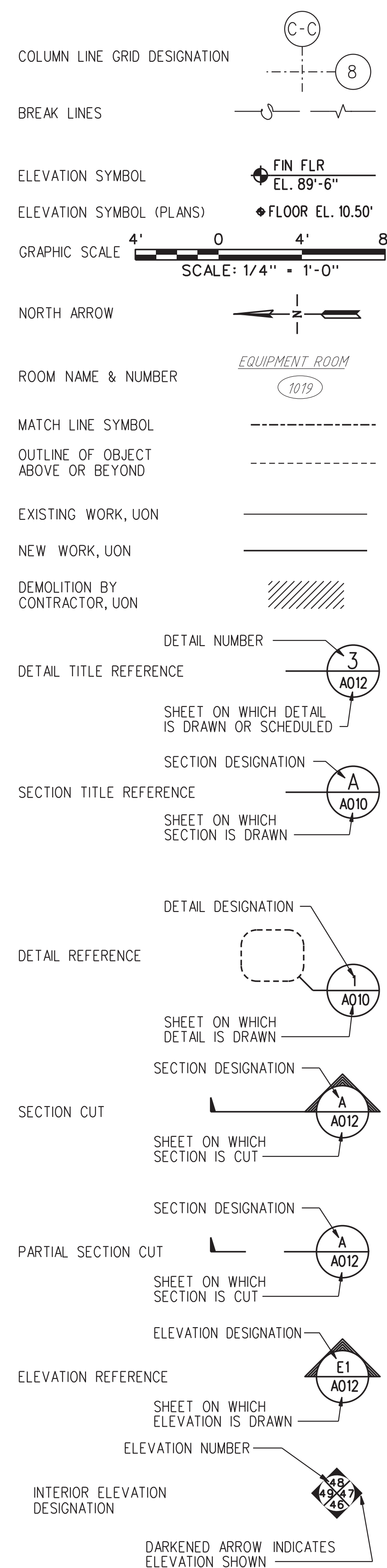
DRAWING LIST

DRAWING NO.	REV.	DATE	DESCRIPTION
FLL-D-1507980-G001	-	5/29/2020	COVER SHEET AND VICINITY MAP
FLL-D-1507980-G002	-	5/29/2020	DRAWING INDEX, LEGENDS & ABBREVIATIONS
FLL-D-1507980-A101	-	5/29/2020	BASE BUILDING & LINK - REFLECTED CEILING PLAN
FLL-D-1507980-D101	-	5/29/2020	BASE BUILDING & LINK - LIGHTING DEMOLITION PLAN
FLL-D-1507980-E100	-	5/29/2020	MAIN PARKING LOT - SITE LIGHTING PLAN
FLL-D-1507980-E101	-	5/29/2020	BASE BUILDING & LINK - LIGHTING PLAN
FLL-D-1507980-E501	-	5/29/2020	LIGHTING INSTALLATION DETAILS
FLL-D-1507980-E601	-	5/29/2020	LIGHTING & PANELBOARD SCHEDULES
FLL-D-1507980-E700	-	5/29/2020	MAIN PARKING LOT - LIGHTING PHOTOMETRIC PLAN
FLL-D-1507980-E701	-	5/29/2020	BASE BUILDING & LINK - LIGHTING PHOTOMETRIC PLAN

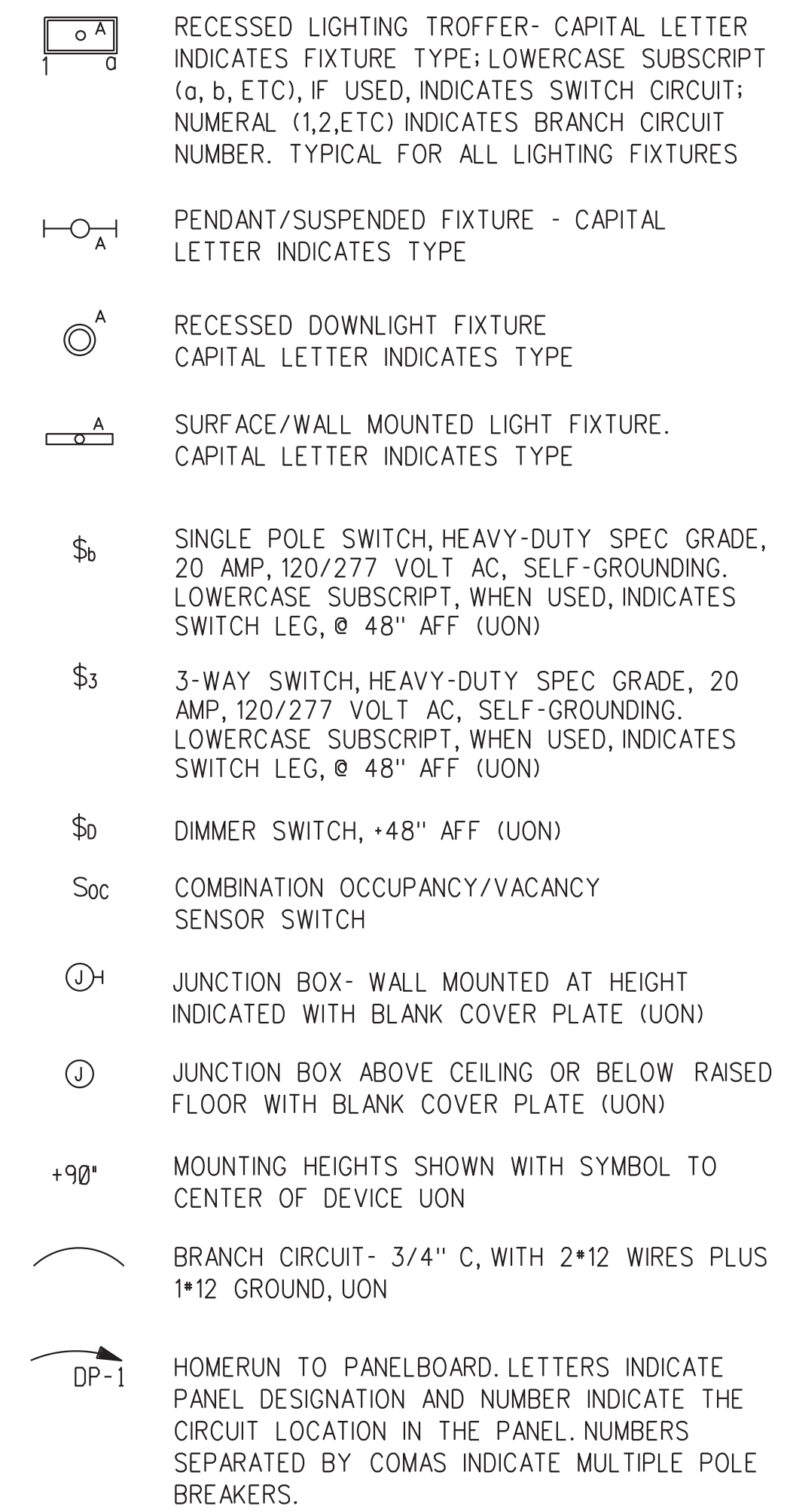
STANDARD ABBREVIATIONS

A	AMP ALTERNATING CURRENT AD ACCESS DOOR AFF ABOVE FINISHED FLOOR AFM AIR FLOW METER/SENSOR AHU AIR HANDLING UNIT AO ANALOG OUTPUT APROX APPROXIMATELY ARCH ARCHITECT/ARCHITECTURAL ASSY ASSEMBLY AUX AUXILIARY AWG AMERICAN WIRE GAUGE	F	FCU FAN COIL UNIT FCV FLOW CONTROL VALVE FD FIRE DAMPER OR FLOOR DRAIN FD/SD FIRE/SMOKE DAMPER FFE FINISHED FLOOR ELEVATION FLG FLANGE FM FLOW METER/SENSOR FPM FEET PER MINUTE FT FEET FW FIRE WATER	P	PH PHASE PHC PREHEAT COIL PI PRESSURE INDICATOR POC POINT OF CONNECTION PRV PRESSURE REDUCING VALVE PS PRESSURE SENSOR PSF POUNDS PER SQUARE FOOT PSI POUNDS PER SQUARE INCH
B	BF BLIND FLANGE BFP BACK FLOW PREVENTER BFV BUTTERFLY VALVE BKR BREAKER BLDG BUILDING BDD BOTTOM OF DUCT BOP BOTTOM OF PIPE BOTT BOTTOM BSMT BASEMENT BTU BRITISH THERMAL UNIT BTUH BTU PER HOUR BTW BETWEEN BV BALL VALVE BWV BACK WATER VALVE	G	G NATURAL GAS GA GAUGE GALV GALVANIZED GFI GROUND FAULT INTERRUPTER GND GROUND GPH GALLONS PER HOUR GPM GALLONS PER MINUTE GV GATE VALVE	R	R RADIUS RA RETURN AIR RCP REFLECTED CEILING PLAN REC RECEPTACLE REF REFERENCE REINF REINFORCING REQ'D REQUIRED REV REVISION OR REVERSE RGS RIGID GALVANIZED STEEL RHC REHEAT COIL RPM REVOLUTIONS PER MINUTE RV REFRIGERANT VENT
C	CC COOLING COIL CD CONDENSATE DRAIN CFM CUBIC FEET PER MINUTE CI CAST IRON CIP CAST IN PLACE CIRC CIRCULATING CKT CIRCUIT CL CENTER LINE CMU CONCRETE MASONRY UNIT CO CLEAN OUT COL COLUMN CONC CONCRETE COND CONDENSATE CONN CONNECTION CONT CONTINUOUS COR CONTRACTING OFFICERS REPRESENTATIVE CTR CENTER OR COOLING TOWER WATER RETURN CTS COOLING TOWER WATER SUPPLY CU CONDENSING UNIT CW DOMESTIC COLD WATER CWR CHILLED WATER RETURN CWS CHILLED WATER SUPPLY	H	HB HOSE BIBB HC HEATING COIL HP HORSE POWER HR HOUR HS HUMIDITY SENSOR HTE HEAT TRACE ELEMENT HU HUMIDIFIER HW DOMESTIC HOT WATER HWC HW CIRCULATION LOOP HWR HEATING WATER RETURN HWS HEATING WATER SUPPLY HZ HERTZ	S	SA SUPPLY AIR SAP SOUND ABSORBING PANEL SCH SCHEDULE SD SMOKE DAMPER SF SUPPLY FAN SIM SIMILAR SPEC SPECIFICATIONS SS SANITARY SEWER STD STANDARD STR STRUCTURE
D	D DRAIN DB DRY BULB TEMPERATURE DBL DOUBLE DC DIRECT CURRENT DDC DIRECT DIGITAL CONTROL DI DUCTILE IRON DIA DIAMETER DISC DISCONNECT DN DOWN DO DIGITAL OUTPUT DP DIFFERENTIAL PRESSURE DPS DP SENSOR	I	ID INSIDE DIAMETER IN INCH INV INVERT IW INDUSTRIAL WATER	T	T THERMOSTAT TEMP TEMPERATURE TI TEMPERATURE INDICATOR TOD TOP OF DUCT TOP TOP OF PIPE TRANS TRANSVERSE TS TEMPERATURE SENSOR TYP TYPICAL
E	EAT ENTERING AIR TEMPERATURE EF EXHAUST FAN ELEV ELEVATION ELEC ELECTRIC/ELECTRICAL EMT ELECTRICAL METAL TUBING EWT ENTERING WATER TEMPERATURE	J	JB JUNCTION BOX	U	UH UNIT HEATER UNO UNLESS NOTED OTHERWISE
		K	KVA KILOVOLT AMPERE KW KILOWATTS	V	V VENT OR VOLTS VAV VARIABLE AIR VOLUME TERMINAL VCT VINYL COMPOSITE TILE VD VOLUME DAMPER VERT VERTICAL VFD VARIABLE FREQUENCY DRIVE VIF VERIFY IN FIELD VS VIBRATION SENSOR
		L	LAT LEAVING AIR TEMPERATURE LBS POUNDS LWT LEAVING WATER TEMPERATURE LFMC LIQUIDTIGHT FLEX METAL COND.	W	W WATTS W/ WITH WB WET BULB TEMPERATURE WC WATER COLUMN W/O WITHOUT WWF WELDED WIRE FABRIC
		M	MAX MAXIMUM MBH 1000 BTU PER HOUR MCB MAIN CIRCUIT BREAKER MCC MOTOR CONTROL CENTER MFG MANUFACTURER MIN MINIMUM	X	XFER TRANSFER XFMR TRANSFORMER
		N	NO NORMALLY CLOSED NIC NOT IN CONTRACT NO NORMALLY OPEN NOM NOMINAL NPT NATIONAL PIPE THREAD NTS NOT TO SCALE	Y	YH YARD HYDRANT
		O	OA OUTSIDE AIR OC ON CENTER OD OUTSIDE DIAMETER		

GENERAL LEGEND



ELECTRICAL LEGEND



GENERAL NOTES

- THESE CONTRACT DRAWINGS ARE SCHEMATIC IN NATURE AND ARE NOT INTENDED TO SHOW ALL POSSIBLE CONDITIONS TO BE ENCOUNTERED DURING THE CONSTRUCTION PROCESS. IT IS THE RESPONSIBILITY OF THE CONTRACTOR TO VERIFY AND CONFIRM ALL INFORMATION PROVIDED HERE WITH SITE CONDITIONS, EQUIPMENT AND MATERIAL SUPPLIERS AND WITH ALL PROJECT REQUIREMENTS TO PRODUCE AN ACCEPTABLE PRODUCT FOR THE GOVERNMENT.
- EXTREME CAUTION MUST BE PRACTICED WHEN WORKING ON ANY OF THE ELECTRICAL POWER SYSTEMS (BUILDING, ESSENTIAL AND CRITICAL SERVICE). THIS BUILDING IS AN OPERATIONAL AIR TRAFFIC CONTROL FACILITY AND UNAUTHORIZED ELECTRICAL OUTAGES MAY CAUSE ACCIDENTS AND/OR LOSS OF LIFE.
- ONLY FAA PERSONNEL MAY OPERATE CIRCUIT BREAKERS. THE CONTRACTOR SHALL NOT OPEN (DE-ENERGIZE) OR CLOSE (ENERGIZE) ANY CIRCUIT BREAKER AT ANY TIME. WORK REQUIRING PERMANENT, TEMPORARY OR PARTIAL ELECTRICAL OUTAGES SHALL BE COORDINATED IN ADVANCE WITH THE COR.
- FIRESTOP CONDUIT PENETRATIONS THROUGH FLOORS AND FIRE RATED WALLS. MATERIALS & METHODS EMPLOYED IN FIRESTOPPING SHALL BE IN ACCORDANCE WITH UL STANDARDS.
- ALL WIRING SHALL CONSIST OF INSULATED COPPER CONDUCTORS, NOT SMALLER THAN 12AWG, INSTALLED IN METALLIC RACEWAYS, UNLESS OTHERWISE SPECIFIED. USE SOLID COPPER CONDUCTOR FOR 10AWG AND SMALLER; STRANDED COPPER CONDUCTOR FOR LARGER THAN 10AWG. COLOR CODING AS INDICATED IN PROJECT SPECIFICATIONS.
- SHARED/Common NEUTRALS SHALL NOT BE PERMITTED, I.E., EACH OVERCURRENT DEVICE SHALL HAVE ITS OWN SEPARATE NEUTRAL CONDUCTOR. NEUTRAL CONDUCTOR SIZES SHALL NOT BE LESS THAN THE RESPECTIVE FEEDER OR PHASE CONDUCTOR SIZES.
- SHARED/Common GROUNDING CONDUCTORS SHALL NOT BE PERMITTED, I.E., EACH OVERCURRENT DEVICE SHALL HAVE ITS OWN SEPARATE GROUND CONDUCTOR.
- ALL EQUIPMENT SHALL BE NEW AND APPROVED ACCORDING TO ANSI AND NEMA STANDARDS.
- ALL EQUIPMENT SHALL BE GROUNDED ACCORDING TO THE LATEST EDITION OF THE NATIONAL ELECTRICAL CODE (NEC) AND FAA-STD-019F.
- ROUTE OF CONDUITS SHOWN IN LAYOUT IS SCHEMATIC AND INTENDED ONLY TO INDICATE CONNECTIONS BETWEEN DEVICES AND/OR EQUIPMENTS. EXACT ROUTING SHALL BE DETERMINED AT JOB SITE TO CONFORM WITH STRUCTURAL CONDITIONS.
- ALL BOXES SHALL NOT BE LESS THAN 4 INCHES SQUARE, 2 1/8 INCHES DEEP, AND SHALL BE INDEPENDENTLY SUPPORTED.
- INDICATED HEIGHTS ARE FROM CENTER OF BOX, OR EQUIPMENT, TO THE FINISHED FLOOR, UNLESS OTHERWISE INDICATED.
- ALL CONSTRUCTION SHALL BE DONE IN A NEAT AND WORKMAN LIKE MANNER IN ACCORDANCE WITH THE PLANS AND SPECIFICATIONS. THE LATEST EDITION OF THE NATIONAL ELECTRICAL CODE SHALL BE FOLLOWED, EXCEPT WHEN FAA STANDARDS ARE MORE STRINGENT, IN WHICH CASE, FAA STANDARDS SHALL GOVERN.

REV	APPROVED DATE	DESCRIPTION	JCN	REDLINE DATE	APVD

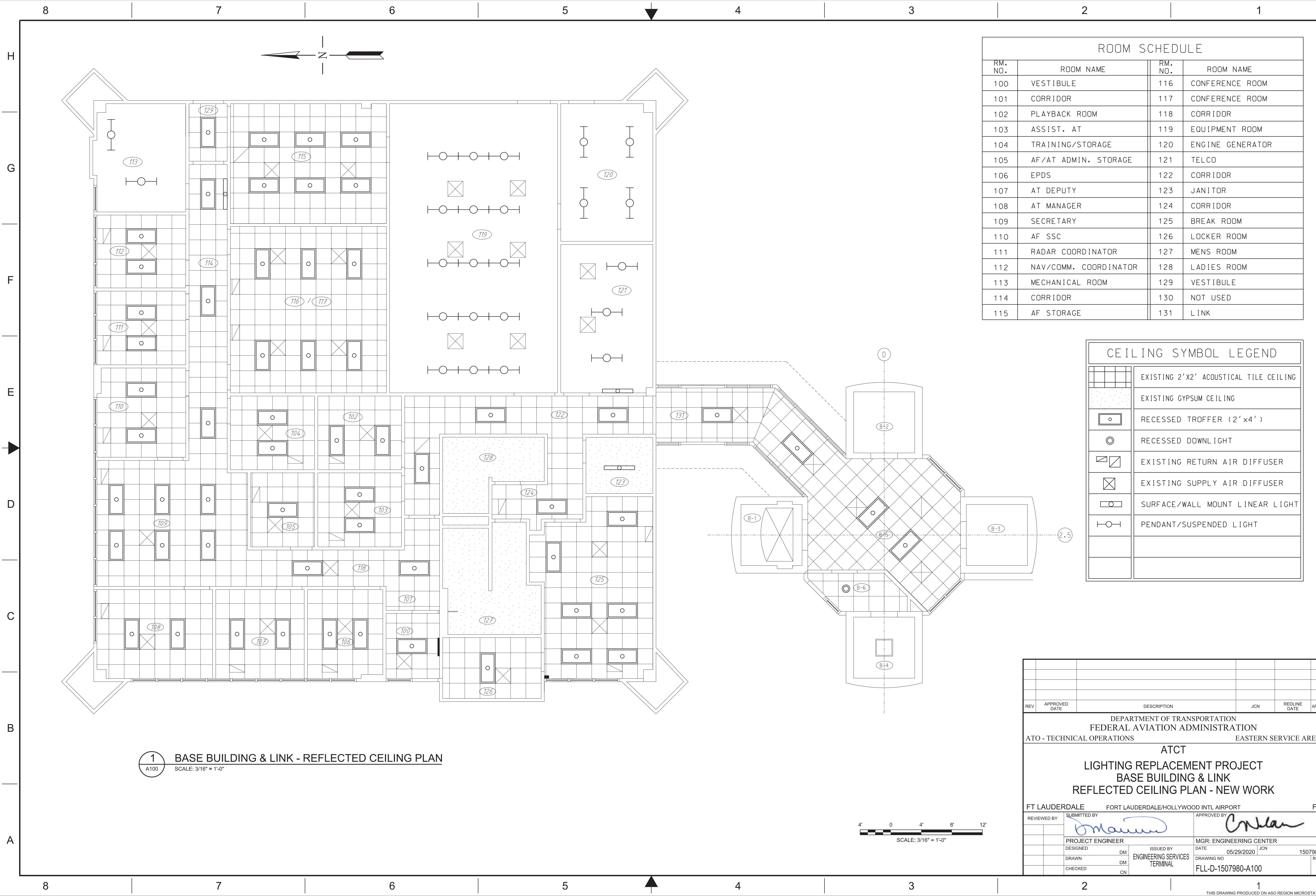
DEPARTMENT OF TRANSPORTATION
FEDERAL AVIATION ADMINISTRATION
ATO - TECHNICAL OPERATIONS EASTERN SERVICE AREA

ATCT
LIGHTING REPLACEMENT PROJECT
DRAWING INDEX, LEGENDS & ABBREVIATIONS

FT LAUDERDALE		FORT LAUDERDALE/HOLLYWOOD INTL AIRPORT		FL
REVIEWED BY	SUBMITTED BY	APPROVED BY		
PROJECT ENGINEER	ISSUED BY	MGR: ENGINEERING CENTER		
DESIGNED	DATE	DATE	JCN	1507980
DRAWN	DM	DRAWING NO		REV
CHECKED	CN	FLL-D-1507980-G002		

FLL-D-1507980-G002.dwg 5/29/2020 2:23:00 PM David Niemi

ISSUED FOR: CONSTRUCTION



ROOM SCHEDULE			
RM. NO.	ROOM NAME	RM. NO.	ROOM NAME
100	VESTIBULE	116	CONFERENCE ROOM
101	CORRIDOR	117	CONFERENCE ROOM
102	PLAYBACK ROOM	118	CORRIDOR
103	ASSIST. AT	119	EQUIPMENT ROOM
104	TRAINING/STORAGE	120	ENGINE GENERATOR
105	AF/AT ADMIN. STORAGE	121	TELCO
106	EPDS	122	CORRIDOR
107	AT DEPUTY	123	JANITOR
108	AT MANAGER	124	CORRIDOR
109	SECRETARY	125	BREAK ROOM
110	AF SSC	126	LOCKER ROOM
111	RADAR COORDINATOR	127	MENS ROOM
112	NAV/COMM. COORDINATOR	128	LADIES ROOM
113	MECHANICAL ROOM	129	VESTIBULE
114	CORRIDOR	130	NOT USED
115	AF STORAGE	131	LINK

CEILING SYMBOL LEGEND	
	EXISTING 2'X2' ACOUSTICAL TILE CEILING
	EXISTING GYPSUM CEILING
	RECESSED TROFFER (2'x4')
	RECESSED DOWNLIGHT
	EXISTING RETURN AIR DIFFUSER
	EXISTING SUPPLY AIR DIFFUSER
	SURFACE/WALL MOUNT LINEAR LIGHT
	PENDANT/SUSPENDED LIGHT

1 BASE BUILDING & LINK - REFLECTED CEILING PLAN
 A100 SCALE: 3/16" = 1'-0"

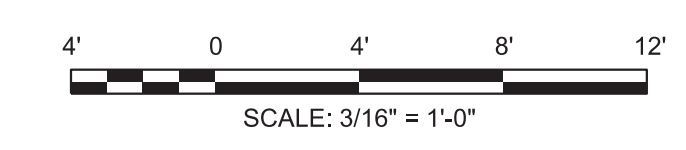
REV	APPROVED DATE	DESCRIPTION	JCN	REDLINE DATE	APVD

DEPARTMENT OF TRANSPORTATION
 FEDERAL AVIATION ADMINISTRATION
 ATO - TECHNICAL OPERATIONS EASTERN SERVICE AREA

ATCT
LIGHTING REPLACEMENT PROJECT
BASE BUILDING & LINK
REFLECTED CEILING PLAN - NEW WORK

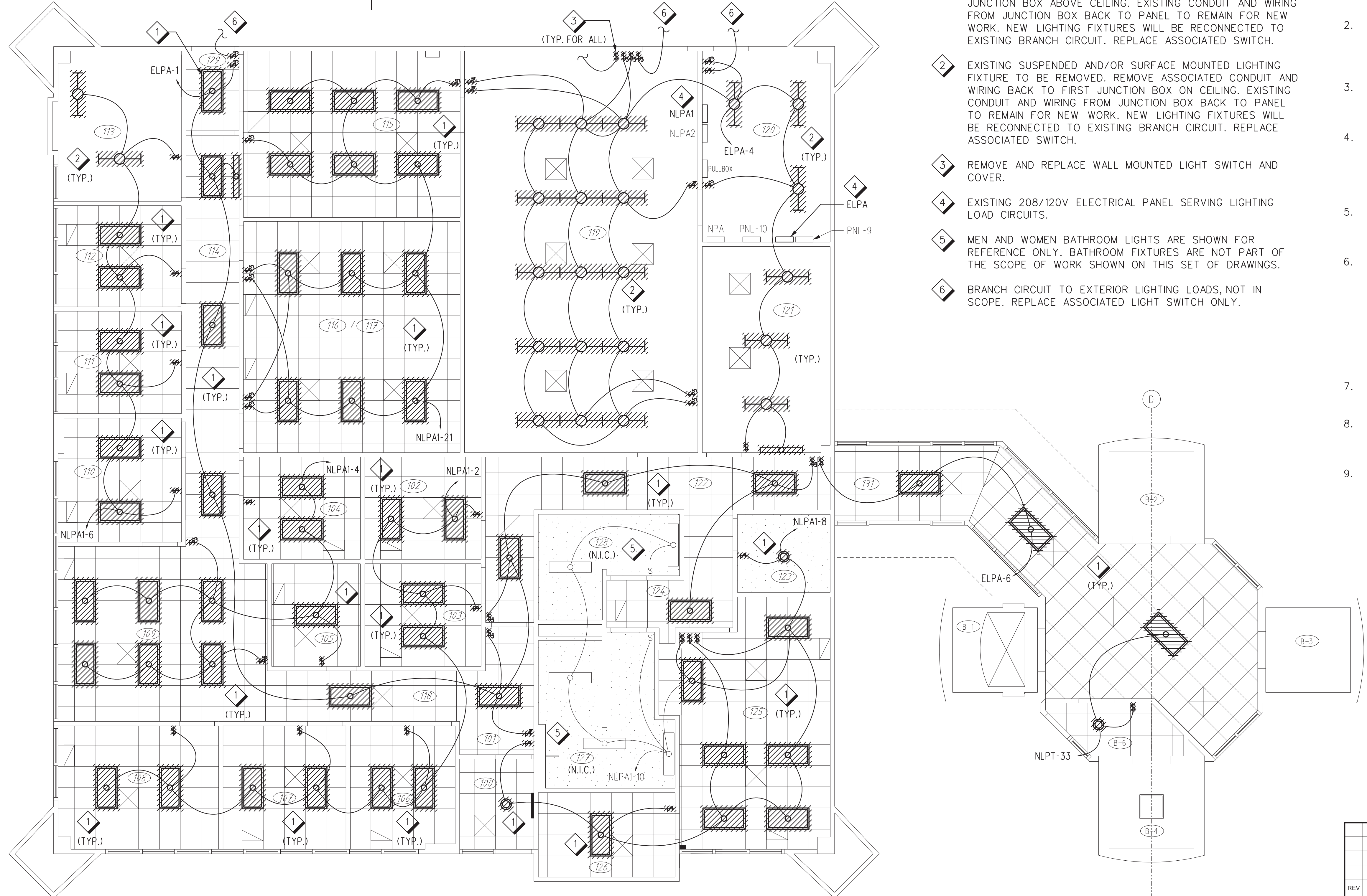
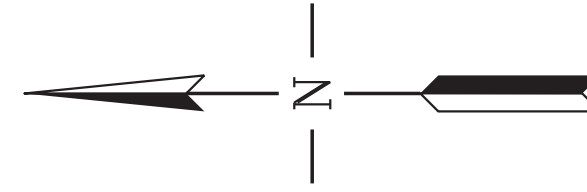
FT LAUDERDALE FORT LAUDERDALE/HOLLYWOOD INTL AIRPORT FL

REVIEWED BY	SUBMITTED BY	APPROVED BY
PROJECT ENGINEER	DESIGNED	MGR: ENGINEERING CENTER
DM	DM	DATE 05/29/2020 JCN 1507980
DRAWN	DM	DRAWING NO. FLL-D-1507980-A100
CN	CN	ISSUED BY ENGINEERING SERVICES TERMINAL
CHECKED	CN	REV



FLL-D-1507980-A100.dgn
 07/23/20
 David Menners

ISSUED FOR: CONSTRUCTION
 EDM: FLL-D-1507980-A100.dgn



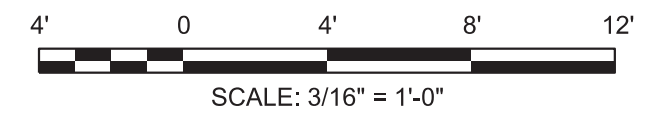
SHEET NOTES

- 1 EXISTING RECESSED LIGHTING FIXTURE TO BE REMOVED. REMOVE ASSOCIATED CONDUIT AND WIRING BACK TO FIRST JUNCTION BOX ABOVE CEILING. EXISTING CONDUIT AND WIRING FROM JUNCTION BOX BACK TO PANEL TO REMAIN FOR NEW WORK. NEW LIGHTING FIXTURES WILL BE RECONNECTED TO EXISTING BRANCH CIRCUIT. REPLACE ASSOCIATED SWITCH.
- 2 EXISTING SUSPENDED AND/OR SURFACE MOUNTED LIGHTING FIXTURE TO BE REMOVED. REMOVE ASSOCIATED CONDUIT AND WIRING BACK TO FIRST JUNCTION BOX ON CEILING. EXISTING CONDUIT AND WIRING FROM JUNCTION BOX BACK TO PANEL TO REMAIN FOR NEW WORK. NEW LIGHTING FIXTURES WILL BE RECONNECTED TO EXISTING BRANCH CIRCUIT. REPLACE ASSOCIATED SWITCH.
- 3 REMOVE AND REPLACE WALL MOUNTED LIGHT SWITCH AND COVER.
- 4 EXISTING 208/120V ELECTRICAL PANEL SERVING LIGHTING LOAD CIRCUITS.
- 5 MEN AND WOMEN BATHROOM LIGHTS ARE SHOWN FOR REFERENCE ONLY. BATHROOM FIXTURES ARE NOT PART OF THE SCOPE OF WORK SHOWN ON THIS SET OF DRAWINGS.
- 6 BRANCH CIRCUIT TO EXTERIOR LIGHTING LOADS, NOT IN SCOPE. REPLACE ASSOCIATED LIGHT SWITCH ONLY.

GENERAL NOTES

- 1. CONTRACTOR SHALL FIELD VERIFY EXISTING CONDITION OF ALL ELECTRICAL EQUIPMENT, BRANCH CIRCUIT CONNECTIONS AND PANELBOARD SCHEDULES, PRIOR TO DEMOLITION WORK.
- 2. ROUTE OF CONDUITS AND BRANCH CIRCUIT NUMBERS SHOWN ARE ILLUSTRATIVE AND INTENDED ONLY TO INDICATE CONNECTIONS BETWEEN ELECTRICAL DEVICES AND EQUIPMENT. EXACT ROUTING AND CIRCUIT CONNECTIONS SHALL BE CONFIRMED AT JOB SITE.
- 3. THE CONTRACTOR SHALL CLEAN THE AREA OF WORK, TO BE CLEAR OF ANY CONSTRUCTION MATERIAL AND OBSTRUCTION, AT THE END OF THE WORK SHIFT EVERY DAY.
- 4. REPLACEMENT OF FIXTURES SHALL BE ACCOMPLISHED IN PHASES, BY BRANCH CIRCUIT GROUPS, TO MINIMIZE DOWNTIME OF EXISTING LIGHTING SYSTEM. ALL FIXTURES ON A SINGLE BRANCH CIRCUIT SHALL BE REPLACED AND TESTED PRIOR TO REMOVING THE NEXT GROUP OF FIXTURES.
- 5. EXISTING LIGHTING FIXTURES SHALL BE USED AS TEMPORARY LIGHTING, TO THE EXTENT POSSIBLE, DURING CONSTRUCTION. CONTRACTOR SHALL PROVIDE ADDITIONAL TEMPORARY LIGHTING, AS REQUIRED.
- 6. CONTRACTOR SHALL TAKE APPROPRIATE MEASURES TO PROTECT ALL BUILDING ELEMENTS "TO REMAIN" FROM DAMAGE DURING CONSTRUCTION, TO INCLUDE BUT NOT LIMITED TO CEILING SYSTEM, FLOORING, FURNITURE, AND EQUIPMENT. THE CONTRACTOR SHALL RETURN TO ITS ORIGINAL STATE OR REPLACE WITH NEW PRODUCTS, ANY BUILDING ELEMENT OR COMPONENTS THAT ARE DAMAGED OR AFFECTED BY THE EXECUTION OF THE CONSTRUCTION ACTIVITIES, AND THAT IS NOT INCLUDED IN THE SCOPE OF WORK OF THIS PROJECT AT NO ADDITIONAL COST TO THE GOVERNMENT.
- 7. CONTRACTOR SHALL MAINTAIN CONTINUITY FOR ALL CIRCUITS SERVING AREA NOT AFFECTED BY THE DEMOLITION WORK.
- 8. CONTRACTOR SHALL PROVIDE NEW CEILING TILES, TO MATCH EXISTING, FOR ALL OPEN AREAS AS A RESULT OF THE DEMOLITION WORK AND THE NEW LIGHTING CONFIGURATION.
- 9. CONTRACTOR SHALL PROTECT EXISTING FIRE ALARM DEVICES FROM DAMAGE DURING CONSTRUCTION, AND PROVIDE DUST COVERS FOR SMOKE DETECTORS. COORDINATE WITH COR TO TEMPORARILY DISABLE LOCAL SMOKE DETECTORS INSIDE THE ROOMS DURING WORK SHIFTS, TO AVOID FALSE TRIGGERING OF SENSORS AND DEVICES.

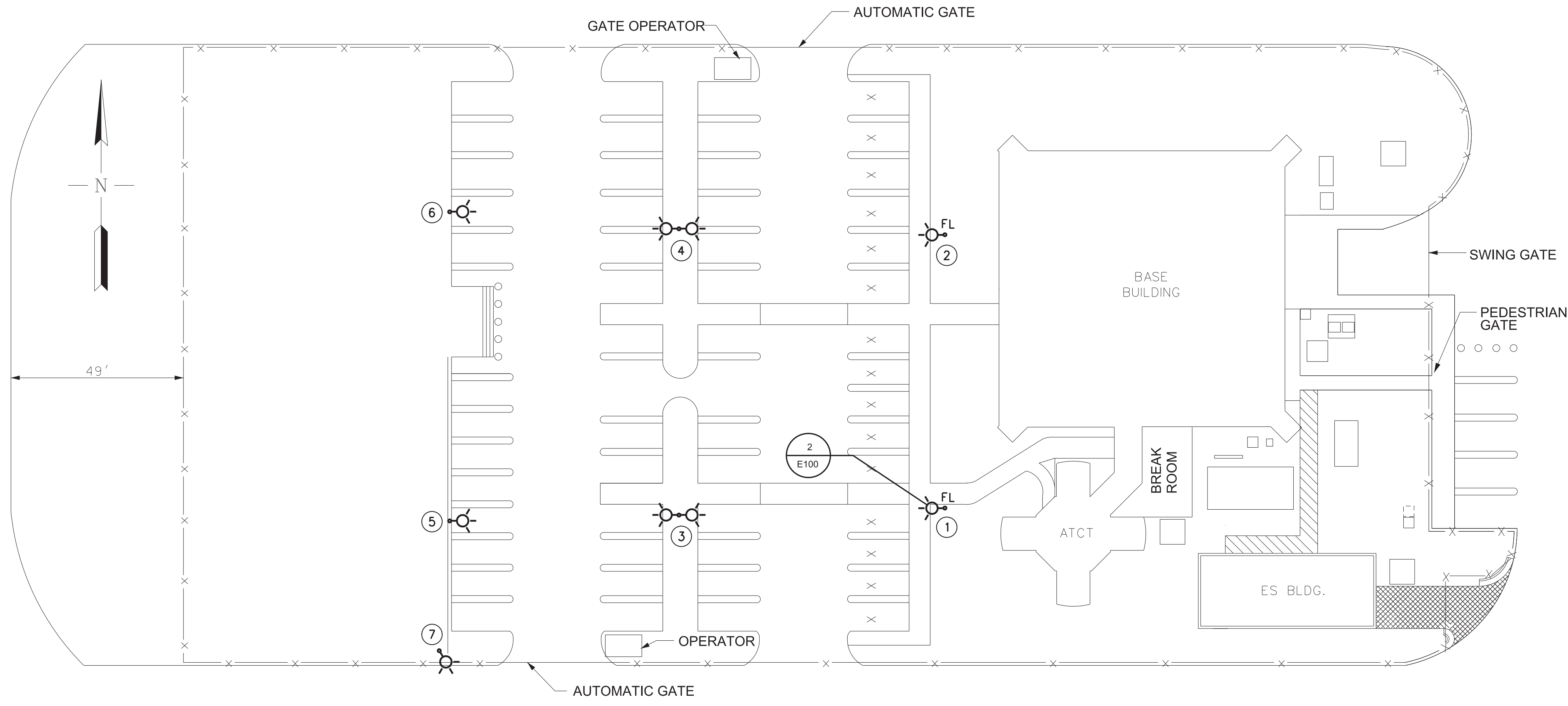
1 BASE BUILDING & LINK - LIGHTING DEMOLITION PLAN
D101 SCALE: 3/16" = 1'-0"



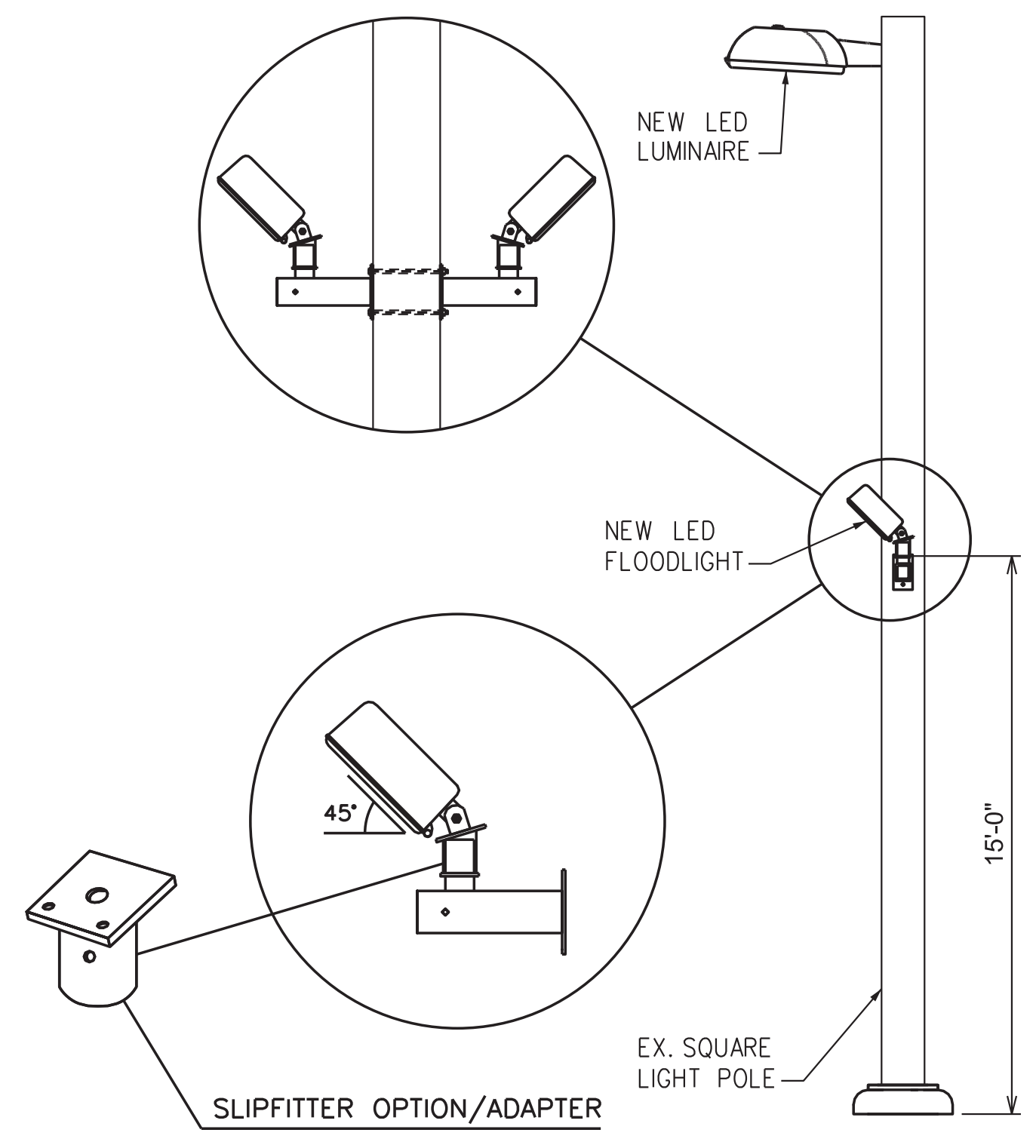
REV	APPROVED DATE	DESCRIPTION	JCN	REDLINE DATE	APVD
DEPARTMENT OF TRANSPORTATION FEDERAL AVIATION ADMINISTRATION ATO - TECHNICAL OPERATIONS EASTERN SERVICE AREA ATCT LIGHTING REPLACEMENT PROJECT BASE BUILDING & LINK LIGHTING DEMOLITION PLAN					
FT LAUDERDALE		FORT LAUDERDALE/HOLLYWOOD INTL AIRPORT		FL	
REVIEWED BY	SUBMITTED BY	APPROVED BY			
	<i>[Signature]</i>	<i>[Signature]</i>			
PROJECT ENGINEER	DESIGNED	ISSUED BY	MGR: ENGINEERING CENTER	DATE	JCN
DM	DM	ENGINEERING SERVICES TERMINAL		05/29/2020	1507980
DRAWN	DM	DRAWING NO			REV
CN	CN	FLL-D-1507980-D101			

FLL-D-1507980-D101.dgn 3:24:11 PM David Manno

ISSUED FOR: CONSTRUCTION



1 ATCT MAIN PARKING LOT - SITE LIGHTING PLAN
E100 SCALE: 1" = 20'-0"



DETAIL NOTES:

1. ALL MOUNTING BRACKETS AND ACCESORIES SHALL BE VERIFIED (CONSULT WITH LIGHTING MANUFACTURER) PRIOR ORDERING AND INSTALLATION TO ENSURE COMPATIBILITY WITH LIGHTING FIXTURES, FOR PROPER FIT, AND A SECURE AND COMPLETE ASSEMBLY.
2. USE ONLY STAINLESS STEEL HARDWARE FOR OUTDOORS.
3. REFER TO LIGHTING FIXTURE SCHEDULE ON DRAWING E601 FOR ADDITIONAL INFORMATION.

2 FLOODLIGHT POLE MOUNTING DETAIL
E100 NOT TO SCALE

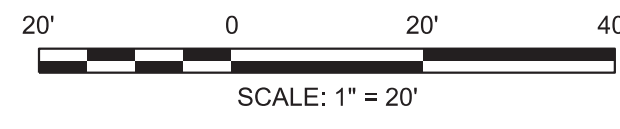
POLE ID	FIXTURE TYPE	CONFIGURATION	REMARKS
1	H & I	SINGLE	REPLACE LIGHT FIXTURE AND PROVIDE TWO ADDITIONAL FLOODLIGHTS MOUNTED TO POLE.
2	H & I	SINGLE	REPLACE LIGHT FIXTURE AND PROVIDE TWO ADDITIONAL FLOODLIGHTS MOUNTED TO POLE.
3	I	DOUBLE	REPLACE LIGHT FIXTURE/S WITH DOUBLE HEAD CONFIGURATION
4	I	DOUBLE	REPLACE LIGHT FIXTURE/S WITH DOUBLE HEAD CONFIGURATION
5	I	SINGLE	REPLACE LIGHT FIXTURE
6	I	SINGLE	REPLACE LIGHT FIXTURE
7	I	SINGLE	REPLACE LIGHT FIXTURE

SHEET NOTES:

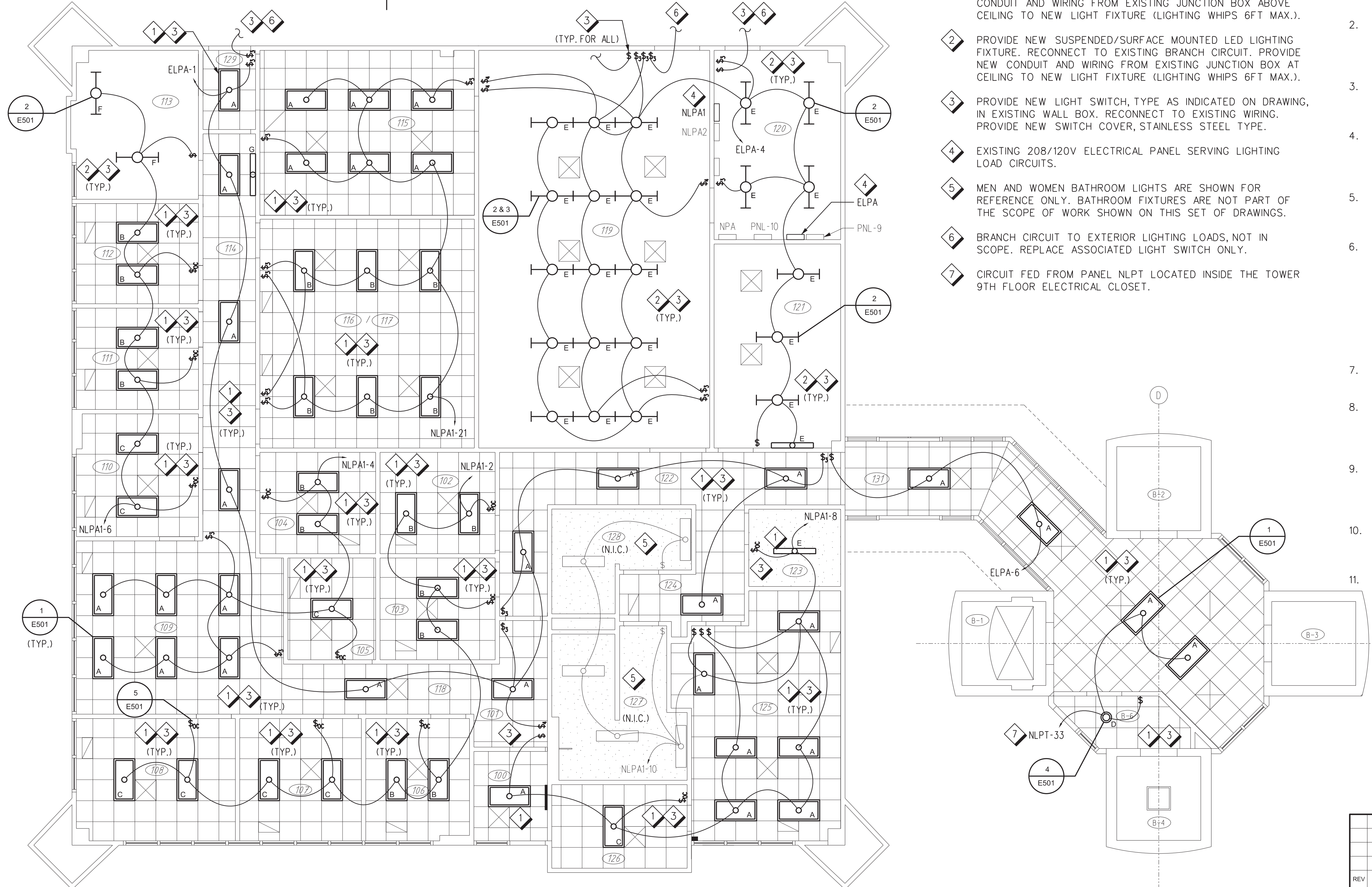
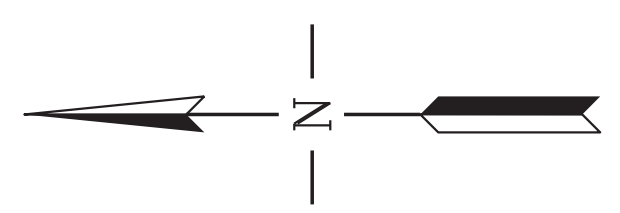
1. CONTRACTOR SHALL FIELD VERIFY EXISTING CONDITION OF ALL ELECTRICAL EQUIPMENT, DEVICES, BRANCH CIRCUIT CONNECTIONS AND PANELBOARD SCHEDULES, PRIOR TO DEMOLITION WORK.
2. CONTRACTOR SHALL REPLACE ALL EXISTING POLE MOUNTED FIXTURES FOR THE MAIN PARKING LOT AT THE FLL ATCT SITE. EXISTING 25' STEEL POLES ARE TO REMAIN, U.O.N.
3. PROVIDE NEW FIXTURES WITH MOUNTING BRACKET, HARDWARE AND ACCESSORIES FOR EACH TYPE OF CONFIGURATION SHOWN. INCLUDE UNIVERSAL MOUNTING BRACKET FOR RETROFIT APPLICATIONS.
4. CONNECT NEW FIXTURES TO EXISTING CIRCUIT AND TIME-CLOCK CONTROLS, SERVED BY PANEL NLPA-1. REPLACE WIRING FROM HANDHOLE AT THE BOTTOM OF POLE UP TO NEW FIXTURES. PROVIDE NEW FUSE HOLDER WITH 15A FUSE.
5. REFER TO DRAWING E601 FOR LIGHTING FIXTURE SCHEDULE.

LEGEND:

- POLE MOUNTED FIXTURE - SINGLE CONFIGURATION (ONE FIXTURE)
- POLE MOUNTED FIXTURE - DOUBLE CONFIGURATION (TWO FIXTURES)
- FL** DENOTES ADDITIONAL FLOODLIGHT FIXTURES INSTALLED ON POLE @ 15'-0" A.F.G. (SEE DETAIL 2/E100)



DEPARTMENT OF TRANSPORTATION FEDERAL AVIATION ADMINISTRATION ATO - TECHNICAL OPERATIONS EASTERN SERVICE AREA					
ATCT					
LIGHTING REPLACEMENT PROJECT ATCT MAIN PARKING LOT SITE LIGHTING PLAN					
FT LAUDERDALE		FORT LAUDERDALE/HOLLYWOOD INTL AIRPORT		FL	
REVIEWED BY	SUBMITTED BY	APPROVED BY			
PROJECT ENGINEER		ISSUED BY		MGR: ENGINEERING CENTER	
DESIGNED	DM	ENGINEERING SERVICES TERMINAL		DATE	05/29/2020
DRAWN	DM			JCN	1507980
CHECKED	CN			DRAWING NO	FLL-D-1507980-E100
				REV	



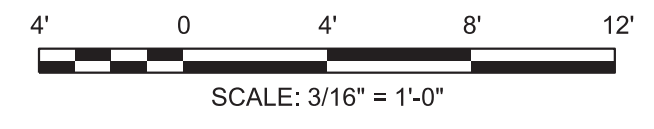
SHEET NOTES

- 1 PROVIDE NEW RECESSED MOUNTED LED LIGHTING FIXTURE. RECONNECT TO EXISTING BRANCH CIRCUIT. PROVIDE NEW CONDUIT AND WIRING FROM EXISTING JUNCTION BOX ABOVE CEILING TO NEW LIGHT FIXTURE (LIGHTING WHIPS 6FT MAX.).
- 2 PROVIDE NEW SUSPENDED/SURFACE MOUNTED LED LIGHTING FIXTURE. RECONNECT TO EXISTING BRANCH CIRCUIT. PROVIDE NEW CONDUIT AND WIRING FROM EXISTING JUNCTION BOX AT CEILING TO NEW LIGHT FIXTURE (LIGHTING WHIPS 6FT MAX.).
- 3 PROVIDE NEW LIGHT SWITCH, TYPE AS INDICATED ON DRAWING, IN EXISTING WALL BOX. RECONNECT TO EXISTING WIRING. PROVIDE NEW SWITCH COVER, STAINLESS STEEL TYPE.
- 4 EXISTING 208/120V ELECTRICAL PANEL SERVING LIGHTING LOAD CIRCUITS.
- 5 MEN AND WOMEN BATHROOM LIGHTS ARE SHOWN FOR REFERENCE ONLY. BATHROOM FIXTURES ARE NOT PART OF THE SCOPE OF WORK SHOWN ON THIS SET OF DRAWINGS.
- 6 BRANCH CIRCUIT TO EXTERIOR LIGHTING LOADS, NOT IN SCOPE. REPLACE ASSOCIATED LIGHT SWITCH ONLY.
- 7 CIRCUIT FED FROM PANEL NLPT LOCATED INSIDE THE TOWER 9TH FLOOR ELECTRICAL CLOSET.

GENERAL NOTES

1. CONTRACTOR SHALL FIELD VERIFY EXISTING CONDITION OF ALL ELECTRICAL EQUIPMENT, BRANCH CIRCUIT CONNECTIONS AND PANELBOARD SCHEDULES, PRIOR TO DEMOLITION WORK.
2. ROUTE OF CONDUITS AND BRANCH CIRCUIT NUMBERS SHOWN ARE ILLUSTRATIVE AND INTENDED ONLY TO INDICATE CONNECTIONS BETWEEN ELECTRICAL DEVICES AND EQUIPMENT. EXACT ROUTING AND CIRCUIT CONNECTIONS SHALL BE CONFIRMED AT JOB SITE.
3. EVERY DAY AT THE END OF THE WORK SHIFT, THE CONTRACTOR SHALL CLEAN THE AREA OF WORK TO BE CLEAR OF ANY CONSTRUCTION MATERIAL AND OBSTRUCTION.
4. REPLACEMENT OF FIXTURES SHALL BE ACCOMPLISHED IN PHASES, BY BRANCH CIRCUIT GROUPS, TO MINIMIZE DOWNTIME OF EXISTING LIGHTING SYSTEM. ALL FIXTURES ON A SINGLE BRANCH CIRCUIT SHALL BE REPLACED AND TESTED PRIOR TO REMOVING THE NEXT GROUP.
5. EXISTING LIGHTING FIXTURES CAN BE USED FOR TEMPORARY LIGHTING DURING CONSTRUCTION. CONTRACTOR SHALL PROVIDE ADDITIONAL TEMPORARY LIGHTING, AS REQUIRED.
6. CONTRACTOR SHALL TAKE APPROPRIATE MEASURES TO PROTECT ALL BUILDING ELEMENTS "TO REMAIN" FROM DAMAGE DURING CONSTRUCTION, TO INCLUDE BUT NOT LIMITED TO CEILING SYSTEM, FLOORING, FURNITURE, AND EQUIPMENT. THE CONTRACTOR SHALL RETURN TO ITS ORIGINAL STATE OR REPLACE WITH NEW PRODUCTS, ANY BUILDING ELEMENT OR COMPONENTS THAT ARE DAMAGED OR AFFECTED BY THE EXECUTION OF THE CONSTRUCTION ACTIVITIES, AND THAT IS NOT INCLUDED IN THE SCOPE OF WORK OF THIS PROJECT, AT NO ADDITIONAL COST TO THE GOVERNMENT.
7. CONTRACTOR SHALL MAINTAIN CONTINUITY FOR ALL CIRCUITS SERVING AREA NOT AFFECTED BY THE DEMOLITION WORK.
8. EXISTING SUSPENDED CEILING IS TO REMAIN. CONTRACTOR SHALL REPLACE ANY EXISTING CEILING TILES DAMAGED DURING CONSTRUCTION, AND PROVIDE NEW FOR ANY OPEN AREAS, AS A RESULT OF THE NEW LIGHTING LAYOUT CONFIGURATION.
9. CONTRACTOR SHALL PROTECT EXISTING FIRE ALARM DEVICES FROM DAMAGE DURING CONSTRUCTION, AND PROVIDE DUST COVERS FOR SMOKE DETECTORS. COORDINATE WITH COR TO TEMPORARILY DISABLE LOCAL SMOKE DETECTORS, TO AVOID FALSE TRIGGERING OF DEVICES.
10. NEW LIGHT FIXTURES SHALL BE SUPPORTED FROM BUILDING STRUCTURAL ELEMENTS ONLY. DO NOT ATTACH OR SUPPORT FROM EXISTING HVAC, RACEWAYS, OR OTHER OVERHEAD EQUIPMENT.
11. REFER TO DRAWING E601 FOR LIGHTING FIXTURE SCHEDULE.

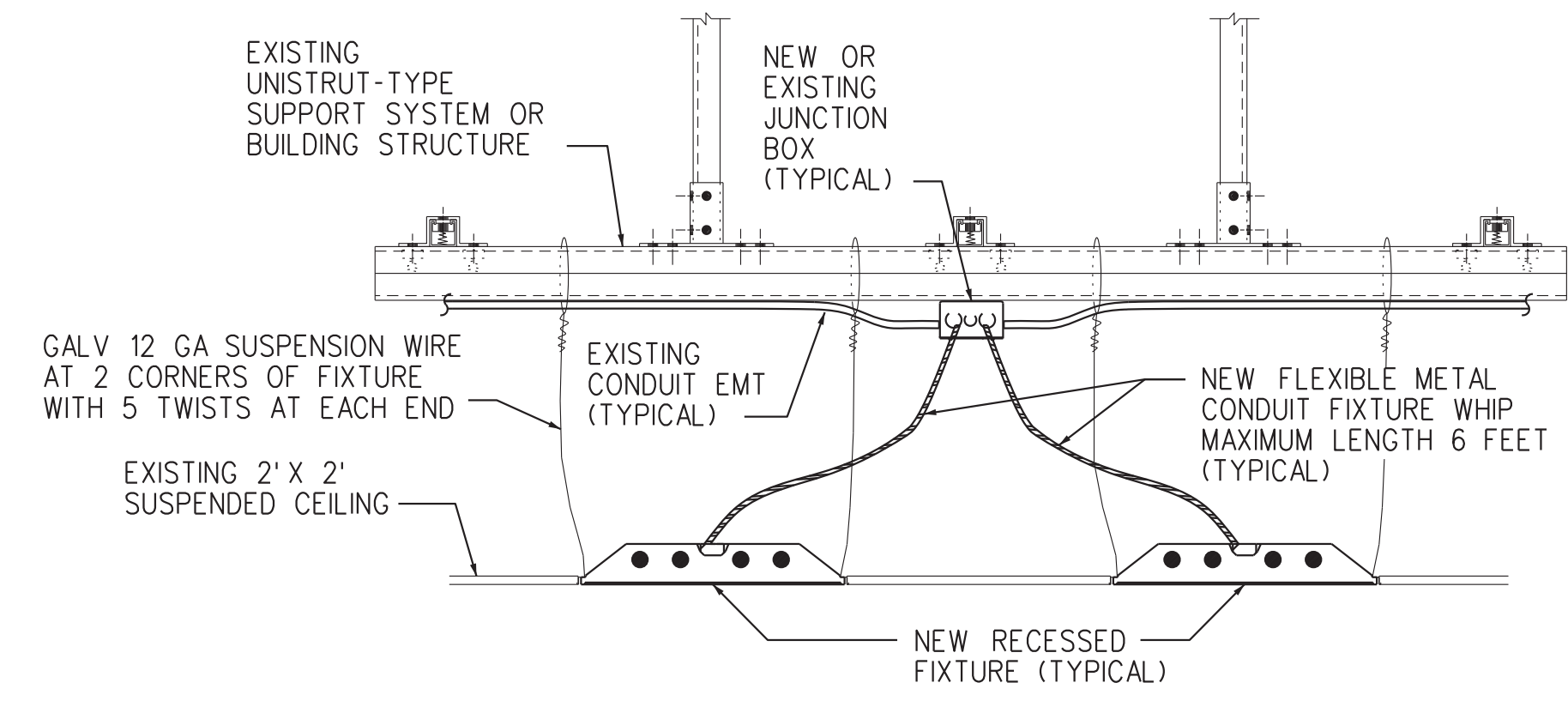
1 BASE BUILDING & LINK - LIGHTING PLAN
E101 SCALE: 3/16" = 1'-0"



REV	APPROVED DATE	DESCRIPTION	JCN	REDLINE DATE	APVD
DEPARTMENT OF TRANSPORTATION FEDERAL AVIATION ADMINISTRATION ATO - TECHNICAL OPERATIONS EASTERN SERVICE AREA					
ATCT LIGHTING REPLACEMENT PROJECT BASE BUILDING & LINK LIGHTING PLAN - NEW WORK					
FT LAUDERDALE		FORT LAUDERDALE/HOLLYWOOD INTL AIRPORT		FL	
REVIEWED BY	SUBMITTED BY	APPROVED BY			
	<i>[Signature]</i>	<i>[Signature]</i>			
PROJECT ENGINEER	DESIGNED	ISSUED BY	MGR: ENGINEERING CENTER		
DM	DM	ENGINEERING SERVICES TERMINAL	DATE	05/29/2020	JCN 1507980
DRAWN	DM		DRAWING NO	FLL-D-1507980-E101	
CHECKED	CN				REV

GENERAL NOTES:

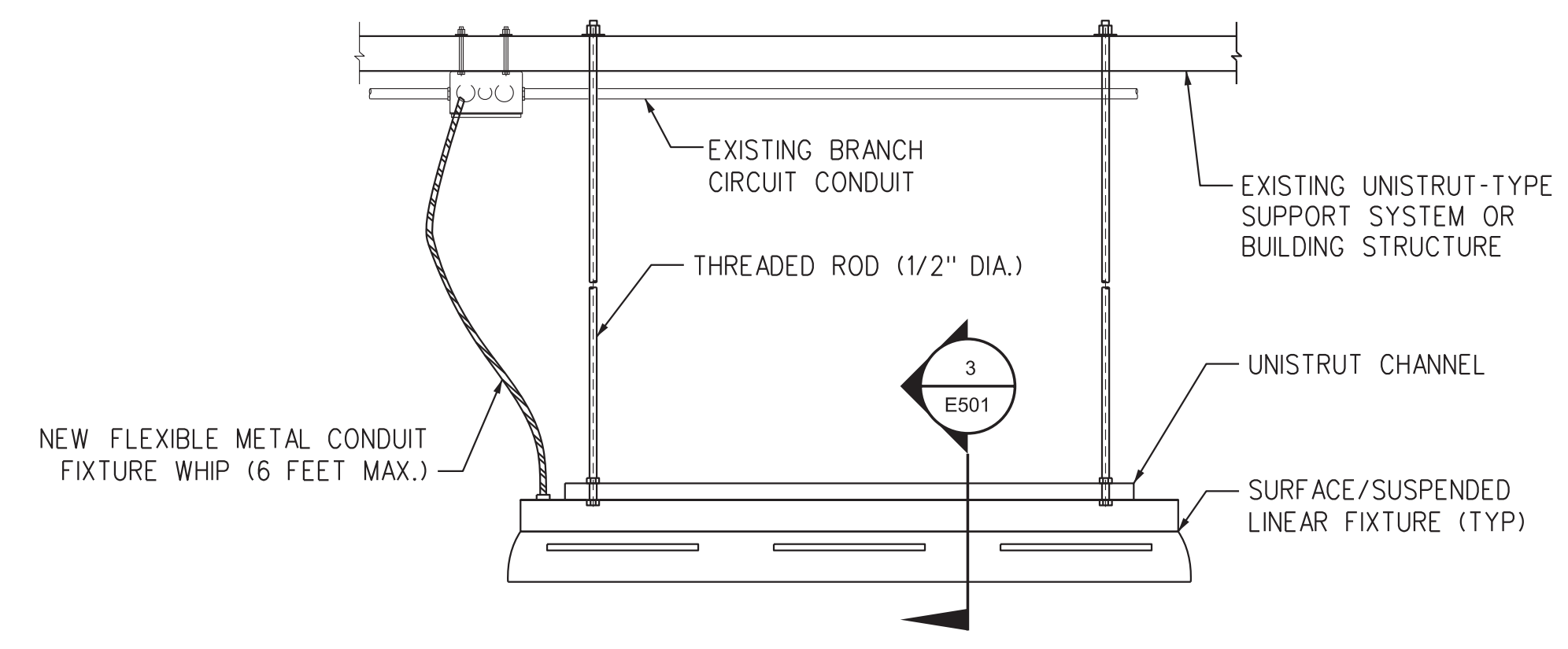
1. THIS DRAWING IS SCHEMATIC IN NATURE AND MAY NOT CONTAIN ALL DETAILS REQUIRED FOR CONSTRUCTION. MODIFICATIONS MAY BE REQUIRED TO ENSURE SUITABILITY OF THESE DRAWINGS FOR THE SPECIFIC INSTALLATION AND/OR APPLICATION. IT IS THE CONTRACTOR'S RESPONSIBILITY TO ENSURE THAT THE INSTALLATION OF THE EQUIPMENT/SYSTEM IS IN ACCORDANCE WITH PROJECT SPECIFICATIONS, MANUFACTURER INSTALLATION INSTRUCTIONS, AND APPLICABLE CODES AND STANDARDS.
2. ALL LUMINAIRE MOUNTING BRACKETS AND/OR ACCESSORIES SHALL BE VERIFIED (CONSULT WITH LIGHTING MANUFACTURER) PRIOR TO INSTALLATION TO ENSURE PROPER FIT, AND A SECURE AND COMPLETE ASSEMBLY.



NOTES:

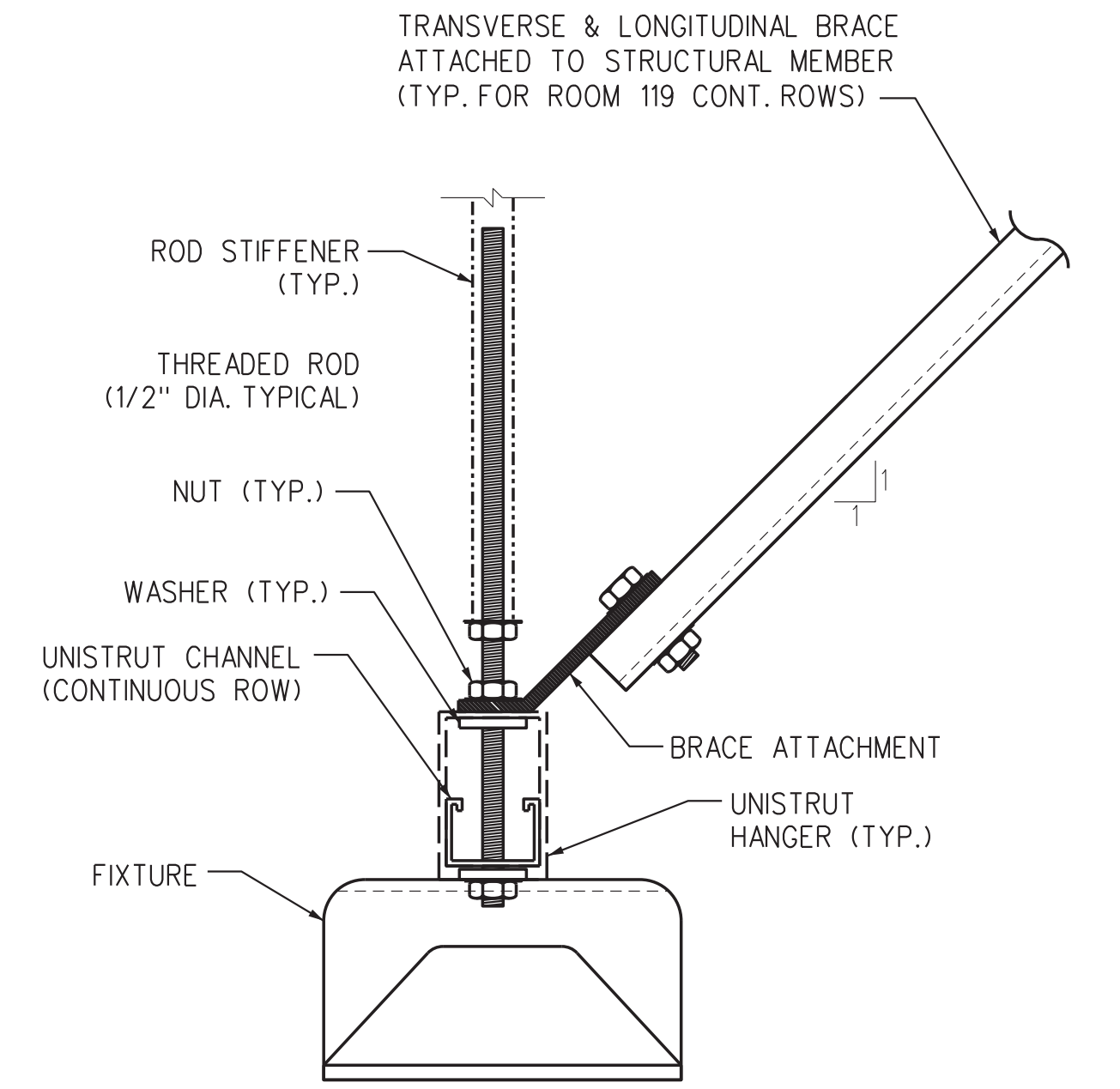
1. PROVIDE NEW CONDUIT AND WIRING FROM EXISTING JUNCTION BOXES TO SUPPORT NEW LIGHTING LAYOUT AND KEEP FLEXIBLE CONDUIT RUNS TO A MAXIMUM OF 6 FEET.
2. INSTALLATION OF LIGHTING FIXTURES AND SUPPORTS TO MEET PROJECT SPECIFICATIONS AND SEISMIC REQUIREMENTS.

1 RECESSED 2'X4' FIXTURE MOUNTING DETAIL
E501 NOT TO SCALE

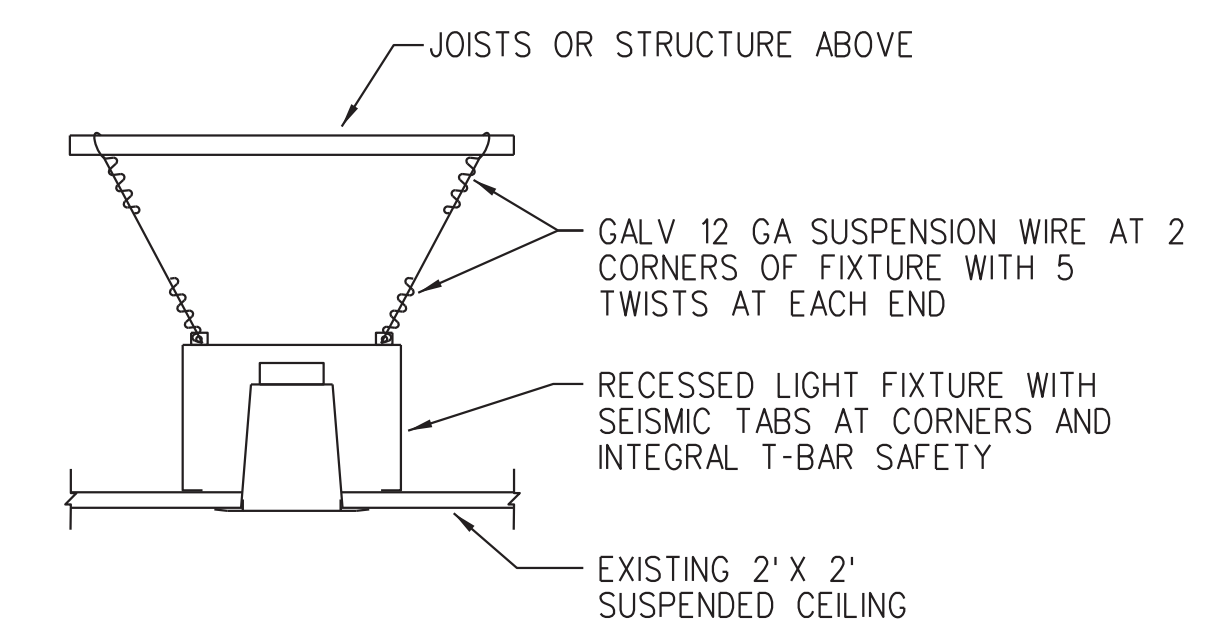


NOTE: CONTRACTOR MUST FIELD COORDINATE THE EXACT LOCATION OF FIXTURES WITH EXISTING OVERHEAD EQUIPMENT TO FACILITATE SERVICE, MAINTENANCE, AND REPAIR OR REPLACEMENT OF COMPONENTS.

2 SUSPENDED FIXTURE STEM MOUNTING DETAIL
E501 NOT TO SCALE



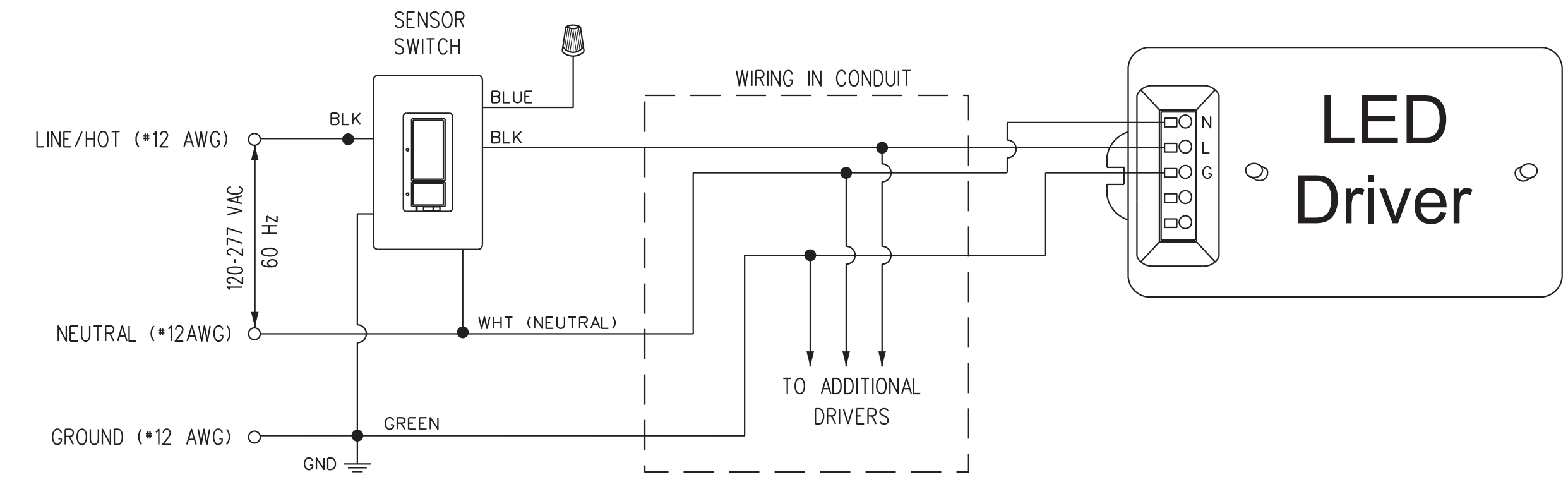
3 SUSPENDED FIXTURE SUPPORT DETAIL
E501 NOT TO SCALE (DETAIL 2 - SECTION VIEW)



NOTES:

1. PROVIDE NEW CONDUIT AND WIRING FROM EXISTING JUNCTION BOXES TO SUPPORT NEW LIGHTING LAYOUT AND KEEP FLEXIBLE CONDUIT RUNS TO A MAXIMUM OF 6 FEET.
2. INSTALLATION OF LIGHTING FIXTURES AND SUPPORTS TO MEET PROJECT SPECIFICATIONS AND SEISMIC REQUIREMENTS.

4 DOWNLIGHT FIXTURE MOUNTING DETAIL
E501 NOT TO SCALE



NOTE: PASSIVE INFRARED WALL SWITCH COMBINATION OCCUPANCY/VACANCY SENSORS: PROGRAMMABLE TO OPERATE AS AN OCCUPANCY SENSOR (AUTOMATIC-ON AND AUTOMATIC-OFF) OR A VACANCY SENSOR (MANUAL-ON AND AUTOMATIC-OFF); BAA (BUY AMERICAN ACT) COMPLIANT; 6 A LIGHTING (120-277 V); COVERAGE OF 900 SQUARE FEET (81SQ M) WITH MOUNTING HEIGHT OF 4 FEET (1.2 M); 180 DEGREE FIELD OF VIEW.

5 OCCUPANCY/VACANCY SENSOR SWITCH WIRING DIAGRAM - TYPICAL
E501 NOT TO SCALE

REV	APPROVED DATE	DESCRIPTION	JCN	REDLINE DATE	APVD
DEPARTMENT OF TRANSPORTATION FEDERAL AVIATION ADMINISTRATION ATO - TECHNICAL OPERATIONS EASTERN SERVICE AREA					
ATCT LIGHTING REPLACEMENT PROJECT LIGHTING INSTALLATION DETAILS					
FT LAUDERDALE		FORT LAUDERDALE/HOLLYWOOD INTL AIRPORT		FL	
REVIEWED BY	SUBMITTED BY	APPROVED			
	<i>[Signature]</i>	<i>[Signature]</i>			
PROJECT ENGINEER	DESIGNED	ISSUED BY	MGR: ENGINEERING CENTER		
	DM	ENGINEERING SERVICES TERMINAL	DATE	05/29/2020	JCN 1507980
DRAWN	DM	DRAWING NO	1507980		
CHECKED	CN	FLL-D-1507980-E501		REV	

LIGHTING FIXTURE SCHEDULE

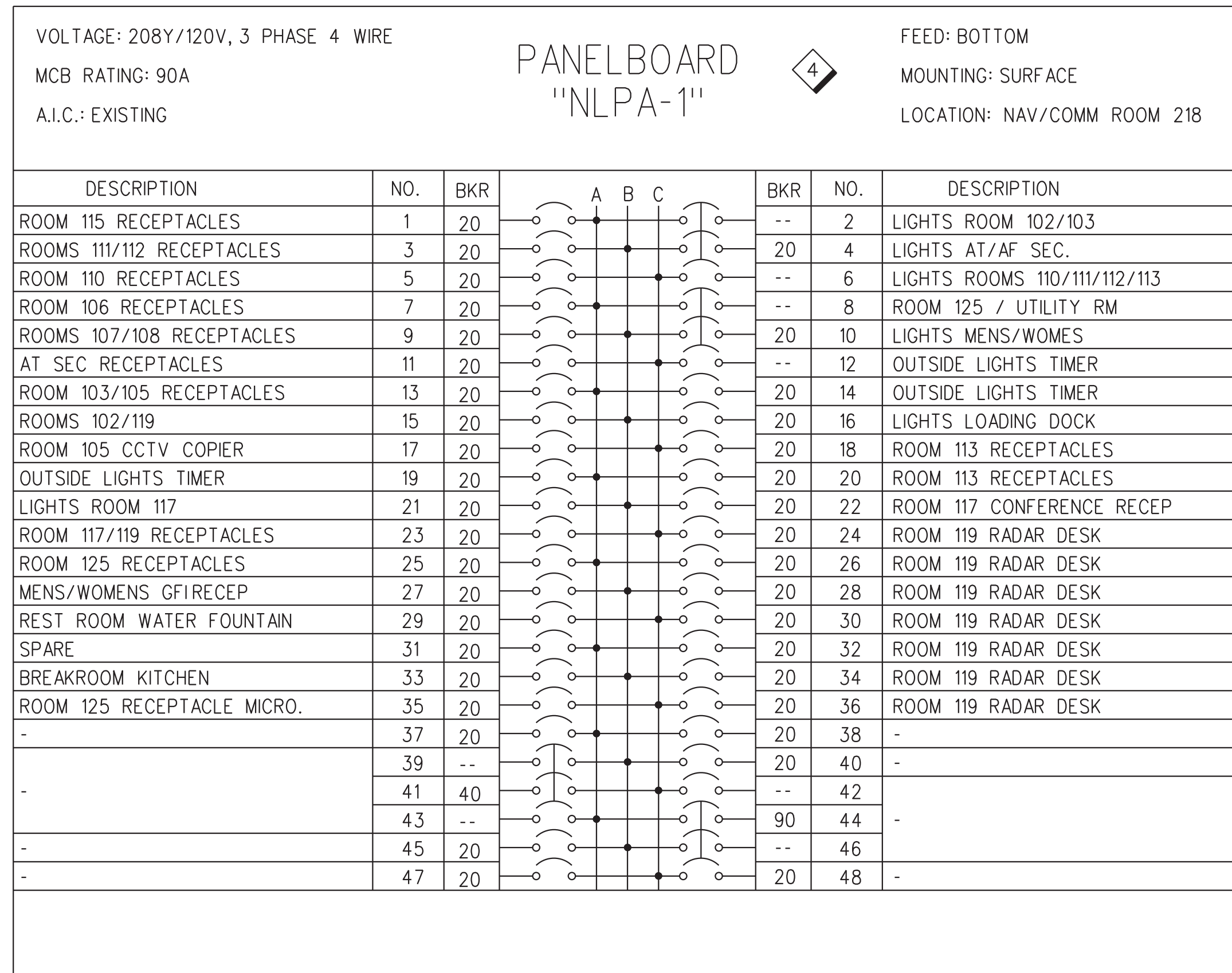
LABEL	QTY.	MANUFACTURER	CATALOG NUMBER	DESCRIPTION	LAMP	VOLTS	DRIVER	MOUNTING	REMARKS
A	(33)	MARK ARCHITECTURAL LIGHTING	WHSPR 2X4 3000LM 35K 80CRIMINI ZT MVOLT SWC USPOM	LED ARCHITECTURAL RECESSED TROFFER 2X4 3000LM 3500K 80CRI W/ SOFT-WHITE CENTER LENS	3500K LEDs	120	LED DRIVER	RECESSED	---
B	(18)	MARK ARCHITECTURAL LIGHTING	WHSPR 2X4 4000LM 35K 80CRIMINI ZT MVOLT SWC USPOM	LED ARCHITECTURAL RECESSED TROFFER 2X4 4000LM 3500K 80CRI W/ SOFT-WHITE CENTER LENS	3500K LEDs	120	LED DRIVER	RECESSED	---
C	(8)	MARK ARCHITECTURAL LIGHTING	WHSPR 2X4 4800LM 35K 80CRIMINI ZT MVOLT SWC USPOM	LED ARCHITECTURAL RECESSED TROFFER 2X4 4800LM 3500K 80CRI W/ SOFT-WHITE CENTER LENS	3500K LEDs	120	LED DRIVER	RECESSED	---
D	(1)	GOHAM ARCHITECTURAL LIGHTING	EVO4SQ 35/15 AR LSS MVOLT EZ1 USPOM	HIGH-PERFORMANCE SOLID-STATE RECESSED LED LUMINAIRE - 4 IN. SQUARE DOWNLIGHT, 80CRI, 3500K, 1500LM, CLEAR SEMI-SPEC	3500K LEDs	120	LED DRIVER	RECESSED	---
E	(24)	LITHONIA LIGHTING	BLWP4 40L AD5M EZ1LP840 USPOM	LOW-PROFILE LED VOLUMETRIC WRAPAROUND FIXTURE - BLWP SERIES 4FT, 4000 LUMENS, CURVED SMOOTH LENS, 4000K CCT, 80CRI	4000K LEDs	120	LED DRIVER	SUSPENDED & SURFACE	---
F	(2)	LITHONIA LIGHTING	BLWP4 48L AD5M EZ1LP840 USPOM	LOW-PROFILE LED VOLUMETRIC WRAPAROUND FIXTURE - BLWP SERIES 4FT, 4800 LUMENS, CURVED SMOOTH LENS, 4000K CCT, 80CRI	4000K LEDs	120	LED DRIVER	SUSPENDED	---
G	(1)	MARK ARCHITECTURAL LIGHTING	SILWD LCB 4FT MSL4 90CRI 35K 600LMF WW MIN1 EGLD MVOLT SLV ZT USPOM	WALL MOUNTED LED FIXTURE - WALLWASH LINEAR	3500K LEDs	120	LED DRIVER	SURFACE/WALL MOUNTED	---
H	(4)	LITHONIA LIGHTING	DSXF1LED P2 40K FL MVOLT IS DDBXD USPOM	HIGH PERFORMANCE LED FLOODLIGHT	4000K LEDs	120	LED DRIVER	POLE MOUNTED	PROVIDE TENON BRACKETS AND ARMS ACCESSORIES (SIMILAR OR EQUAL TO SPAULDING FLB12-12). CONSULT WITH FACTORY FOR COMPATIBILITY WITH FIXTURE AND RETROFIT APPLICATION TO POLES.
I	(9)	LITHONIA LIGHTING	DSX0 LED P6 40K T3S MVOLT SPUMBA DDBXD USPOM	HIGH PERFORMANCE LED AREA LUMINAIRE	4000K LEDs	120	LED DRIVER	POLE MOUNTED	APPLICABLE FOR BOTH SINGLE AND DOUBLE HEAD CONFIGURATION, SEE DRAWING E100. PROVIDE UNIVERSAL MOUNTING BRACKET FOR RETROFIT ON EXISTING PRE-DRILLED POLES.

GENERAL NOTES:

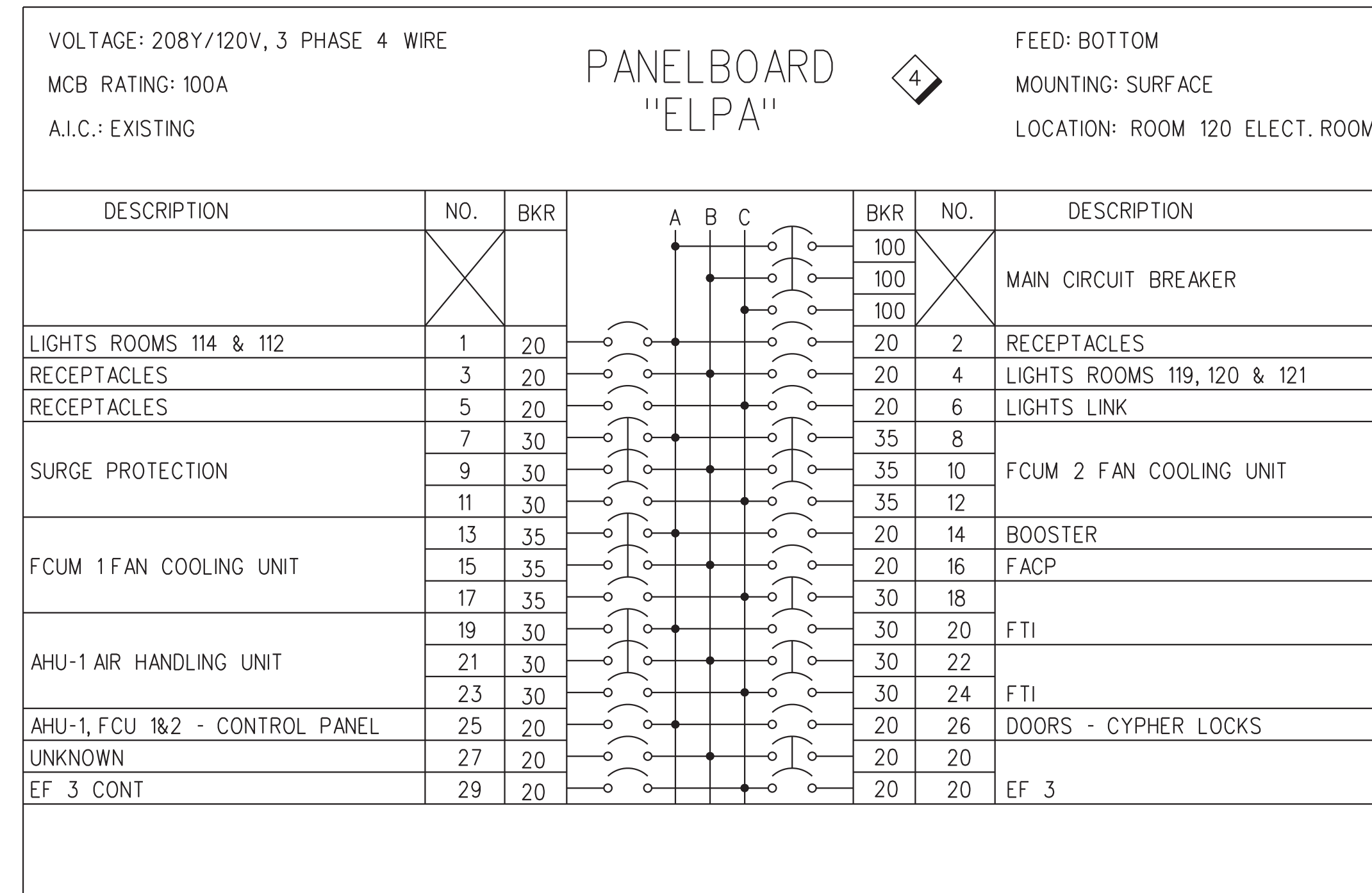
- EXTREME CAUTION MUST BE PRACTICED WHEN WORKING ON ANY OF THE ELECTRICAL POWER SYSTEMS (BUILDING, ESSENTIAL AND CRITICAL SERVICE). THIS IS AN OPERATIONAL AIR TRAFFIC CONTROL FACILITY AND UNAUTHORIZED ELECTRICAL OUTAGES MAY CAUSE ACCIDENTS AND/OR LOSS OF LIFE.
- ONLY FAA PERSONNEL MAY OPERATE CIRCUIT BREAKERS. THE CONTRACTOR SHALL NOT OPEN (DE-ENERGIZE) OR CLOSE (ENERGIZE) ANY CIRCUIT BREAKER AT ANY TIME. WORK REQUIRING PERMANENT, TEMPORARY OR PARTIAL ELECTRICAL OUTAGES SHALL BE COORDINATED IN ADVANCE WITH THE COR, FOR AFTER-HOURS.
- CONTRACTOR SHALL FIELD VERIFY EXISTING CONDITION OF ALL ELECTRICAL EQUIPMENT, BRANCH CIRCUIT CONNECTIONS AND PANELBOARD SCHEDULES, PRIOR TO DEMOLITION WORK..
- MAINTAIN CONTINUITY FOR ALL CIRCUITS SERVING AREAS NOT AFFECTED BY DEMOLITION WORK.

SHEET NOTES:

- THE FIXTURES SPECIFIED IN THE LIGHTING FIXTURE SCHEDULE ON THIS DRAWINGS ESTABLISH A LEVEL OF QUALITY, APPEARANCE, AND PERFORMANCE THAT ANY SUBSTITUTED FIXTURES MUST MATCH OR EXCEED. SUBSTITUTIONS FOR THE SPECIFIED FIXTURES SHALL BE SUBMITTED IN ADVANCE TO THE FAA COR AND WILL BE REVIEWED BY THE ENGINEER OF RECORD FOR COMPLIANCE AND APPROVAL. A LIGHTING PHOTOMETRIC STUDY SHALL BE INCLUDED AS PART OF THE SUBMITTAL FOR REVIEW AND APPROVAL.
- ALL LUMINAIRE BALLASTS, DRIVERS, ROW LENGTH OPTIONS, MOUNTING BRACKETS, SUPPORTS AND ACCESORIES SHALL BE VERIFIED (CONSULT WITH LIGHTING MANUFACTURER) PRIOR ORDERING AND INSTALLATION, TO ENSURE A PROPER FIT, AND A SECURE AND COMPLETE ASSEMBLY.
- PROVIDE LIGHTING PRODUCTS MANUFACTURED IN THE UNITED STATES OF AMERICA.
- PANELBOARD SCHEDULES ARE SHOWN AS REFERENCE ONLY. CONTRACTOR SHALL FIELD VERIFY LIGHTING BRANCH CIRCUITS ASSOCIATED WITH THE SCOPE OF WORK. ALL LIGHTING BRANCH CIRCUITS ARE EXISTING TO REMAIN. CONTRACTOR SHALL CONNECT NEW LIGHT FIXTURES TO EXISTING BRANCH CIRCUIT WIRING.



PANELBOARD "NLPA-1" SCHEDULE
FOR REFERENCE ONLY

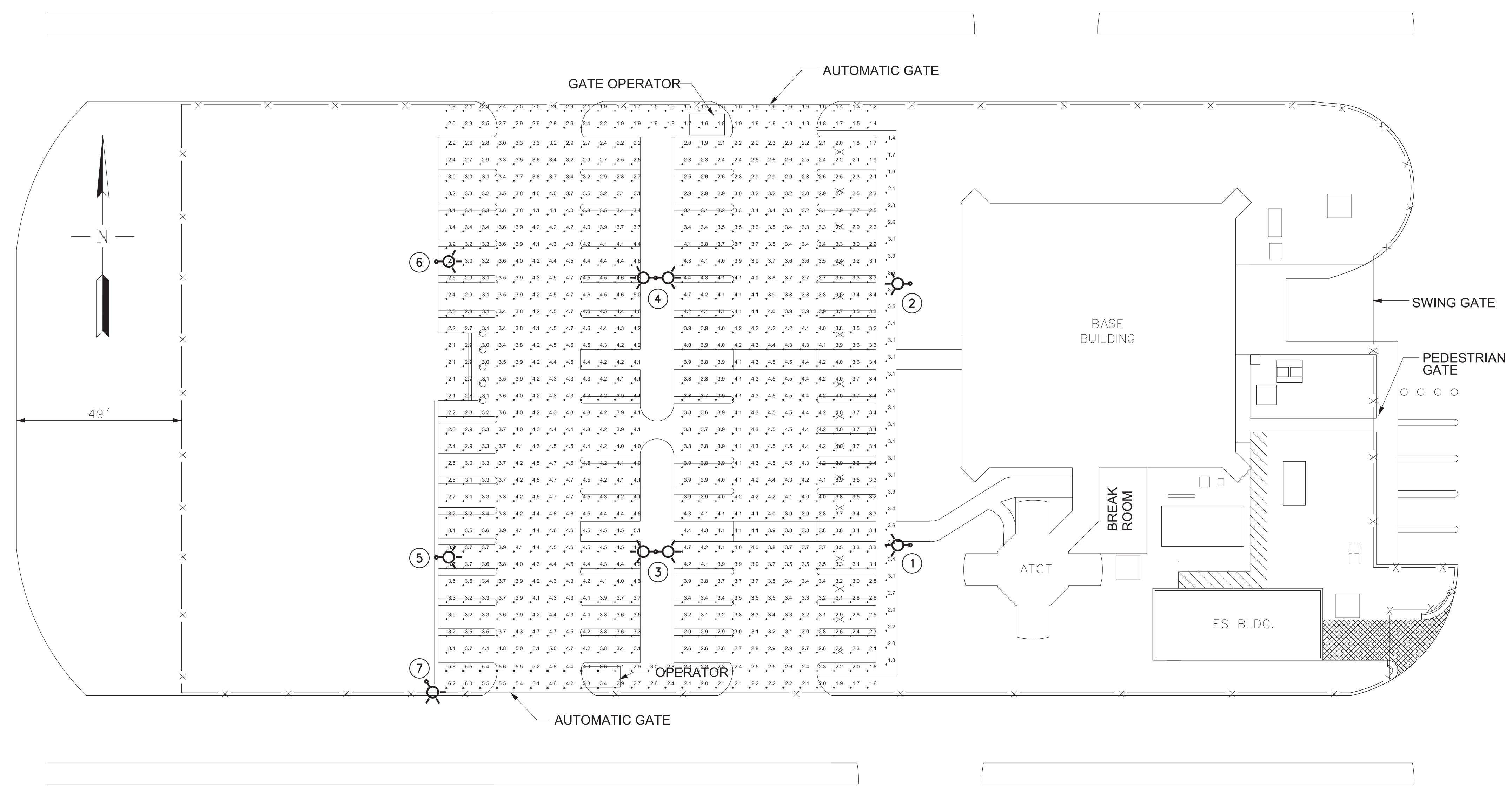


PANELBOARD "ELPA" SCHEDULE
FOR REFERENCE ONLY

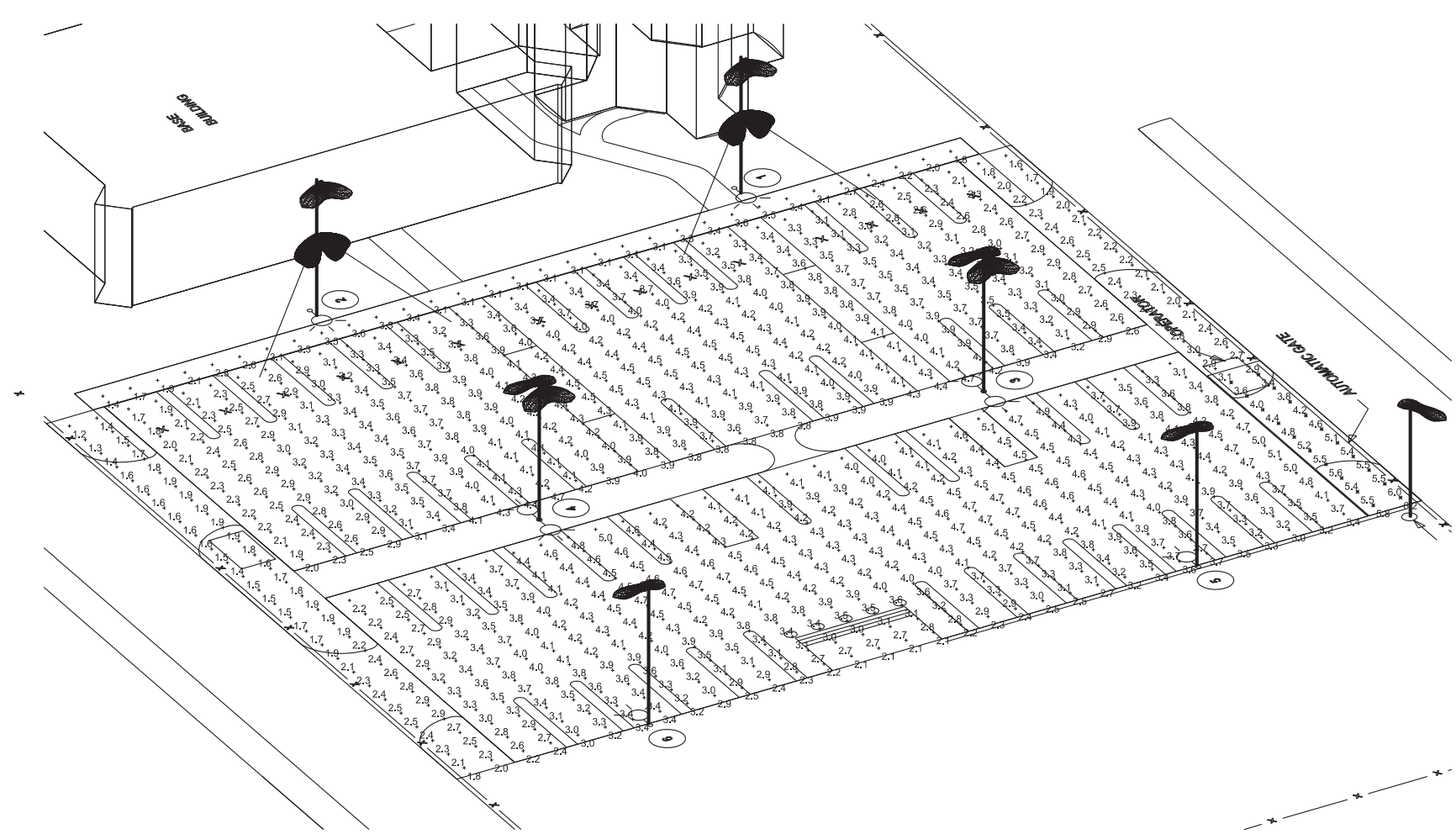
REV	APPROVED DATE	DESCRIPTION	JCN	REDLINE DATE	APVD					
DEPARTMENT OF TRANSPORTATION FEDERAL AVIATION ADMINISTRATION ATO - TECHNICAL OPERATIONS EASTERN SERVICE AREA ATCT LIGHTING REPLACEMENT PROJECT LIGHTING & PANELBOARD SCHEDULES										
FT LAUDERDALE			FORT LAUDERDALE/HOLLYWOOD INTL AIRPORT				FL			
REVIEWED BY	SUBMITTED BY	APPROVED BY								
	<i>[Signature]</i>	<i>[Signature]</i>								
PROJECT ENGINEER	DESIGNED	DM	ISSUED BY	MGR: ENGINEERING CENTER	DATE	05/29/2020	JCN	1507980		
DRAWN	DM	ENGINEERING SERVICES TERMINAL	DRAWING NO	FLL-D-1507980-E601	REV					
CHECKED	CN									

FLL-D-1507980-E601.dgn
 05/29/2020 3:07:17 PM
 David Navarro

ISSUED FOR: CONSTRUCTION
 EDW: FLL-D-1507980-E601.dgn



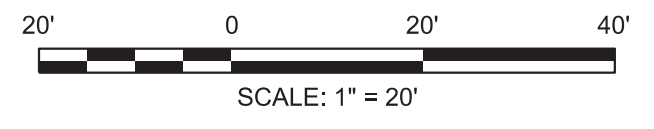
1 ATCT MAIN PARKING LOT - LIGHTING PHOTOMETRIC PLAN
 SCALE: 1" = 20'-0"



2 ATCT MAIN PARKING LOT - LIGHTING SIMULATION VIEW
 SCALE: 1" = 20'-0"

STATISTICS:

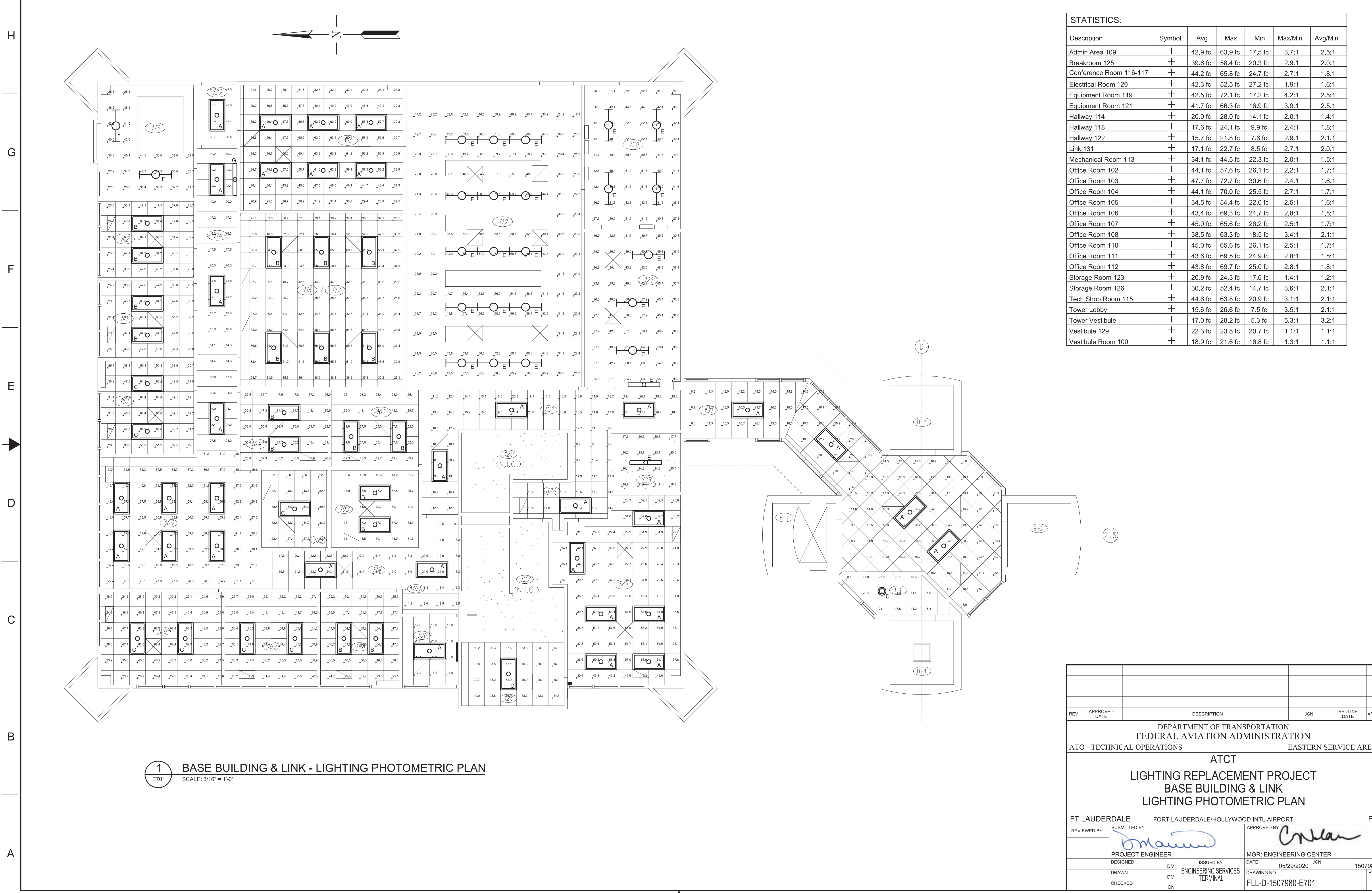
Description	Symbol	Avg	Max	Min	Max/Min	Avg/Min
Main Entrance Gate	✱	5.0 fc	6.2 fc	3.4 fc	1.8:1	1.5:1
North Perimeter	+	1.9 fc	2.9 fc	1.2 fc	2.4:1	1.6:1
Parking Lot A	+	3.5 fc	4.7 fc	1.7 fc	2.8:1	2.1:1
Parking Lot B	+	3.8 fc	5.1 fc	2.1 fc	2.4:1	1.8:1
Sidewalk	+	2.9 fc	3.6 fc	1.4 fc	2.6:1	2.1:1
South Perimeter	+	3.3 fc	6.2 fc	1.6 fc	3.9:1	2.1:1



REV		APPROVED DATE	DESCRIPTION	JCN	REDLINE DATE	APVD
DEPARTMENT OF TRANSPORTATION FEDERAL AVIATION ADMINISTRATION ATO - TECHNICAL OPERATIONS EASTERN SERVICE AREA ATCT LIGHTING REPLACEMENT PROJECT ATCT MAIN PARKING LOT LIGHTING PHOTOMETRIC PLAN						
FT LAUDERDALE		FORT LAUDERDALE/HOLLYWOOD INTL AIRPORT			FL	
REVIEWED BY	SUBMITTED BY	APPROVED BY				
	<i>DM</i>	<i>CP</i>				
PROJECT ENGINEER	DESIGNED	ISSUED BY	MGR: ENGINEERING CENTER			
DM	DM	ENGINEERING SERVICES TERMINAL	DATE	05/29/2020	JCN	1507980
DRAWN	DM		DRAWING NO	FLL-D-1507980-E700		
CHECKED	CN					REV

FLL-D-1507980-E700.dgn
 05/29/2020 3:15:53 PM
 David Manno

ISSUED FOR: CONSTRUCTION
 EDM: FLL-D-1507980-E700.dgn



STATISTICS:

Description	Symbol	Avg	Max	Min	Max/Min	Avg/Min
Admin Area 109	+	42.9 fc	63.9 fc	17.5 fc	3.7:1	2.5:1
Breakroom 125	+	39.6 fc	58.4 fc	20.3 fc	2.9:1	2.0:1
Conference Room 116-117	+	44.2 fc	65.8 fc	24.7 fc	2.7:1	1.8:1
Electrical Room 120	+	42.3 fc	52.5 fc	27.2 fc	1.9:1	1.6:1
Equipment Room 119	+	42.5 fc	72.1 fc	17.2 fc	4.2:1	2.5:1
Equipment Room 121	+	41.7 fc	66.3 fc	16.9 fc	3.9:1	2.5:1
Hallway 114	+	20.0 fc	28.0 fc	14.1 fc	2.0:1	1.4:1
Hallway 118	+	17.6 fc	24.1 fc	9.9 fc	2.4:1	1.8:1
Hallway 122	+	15.7 fc	21.8 fc	7.6 fc	2.9:1	2.1:1
Link 131	+	17.1 fc	22.7 fc	8.5 fc	2.7:1	2.0:1
Mechanical Room 113	+	34.1 fc	44.5 fc	22.3 fc	2.0:1	1.5:1
Office Room 102	+	44.1 fc	57.6 fc	26.1 fc	2.2:1	1.7:1
Office Room 103	+	47.7 fc	72.7 fc	30.6 fc	2.4:1	1.6:1
Office Room 104	+	44.1 fc	70.0 fc	25.5 fc	2.7:1	1.7:1
Office Room 105	+	34.5 fc	54.4 fc	22.0 fc	2.5:1	1.6:1
Office Room 106	+	43.4 fc	69.3 fc	24.7 fc	2.8:1	1.8:1
Office Room 107	+	45.0 fc	65.6 fc	26.2 fc	2.5:1	1.7:1
Office Room 108	+	38.5 fc	63.3 fc	18.5 fc	3.4:1	2.1:1
Office Room 110	+	45.0 fc	65.6 fc	26.1 fc	2.5:1	1.7:1
Office Room 111	+	43.6 fc	69.5 fc	24.9 fc	2.8:1	1.8:1
Office Room 112	+	43.8 fc	69.7 fc	25.0 fc	2.8:1	1.8:1
Storage Room 123	+	20.9 fc	24.3 fc	17.6 fc	1.4:1	1.2:1
Storage Room 126	+	30.2 fc	52.4 fc	14.7 fc	3.6:1	2.1:1
Tech Shop Room 115	+	44.6 fc	63.8 fc	20.9 fc	3.1:1	2.1:1
Tower Lobby	+	15.6 fc	26.6 fc	7.5 fc	3.5:1	2.1:1
Tower Vestibule	+	17.0 fc	28.2 fc	5.3 fc	5.3:1	3.2:1
Vestibule 129	+	22.3 fc	23.8 fc	20.7 fc	1.1:1	1.1:1
Vestibule Room 100	+	18.9 fc	21.6 fc	16.8 fc	1.3:1	1.1:1

1 BASE BUILDING & LINK - LIGHTING PHOTOMETRIC PLAN
 E701 SCALE: 3/16" = 1'-0"

REV	APPROVED DATE	DESCRIPTION	JCN	REDLINE DATE	APVD
DEPARTMENT OF TRANSPORTATION FEDERAL AVIATION ADMINISTRATION ATO - TECHNICAL OPERATIONS EASTERN SERVICE AREA					
ATCT LIGHTING REPLACEMENT PROJECT BASE BUILDING & LINK LIGHTING PHOTOMETRIC PLAN					
FT LAUDERDALE		FORT LAUDERDALE/HOLLYWOOD INTL AIRPORT		FL	
REVIEWED BY	SUBMITTED BY	APPROVED BY			
	<i>[Signature]</i>	<i>[Signature]</i>			
PROJECT ENGINEER	DESIGNED	ISSUED BY	MGR: ENGINEERING CENTER	DATE	JCN
DM	DM	ENGINEERING SERVICES TERMINAL		05/29/2020	1507980
DRAWN	CN	CHECKED	DRAWING NO	FLL-D-1507980-E701	REV

FLL-D-1507980-E701.dgn
 3:26:10 PM
 David Manno

ISSUED FOR: CONSTRUCTION
 FLL-D-1507980-E701.dgn