

Case, Lowe & Hart, Inc. • 2484 Washington Blvd.
Suite 510 • Ogden, Utah 84401-2346
801-399-5821 • www.clhae.com

CONSULTANTS

STAMP



BLM Pumphouse River
Operations Facility
Kremmling Field Office, Colorado

MARK	DATE	DESCRIPTION

ISSUE DATE:	6/1/2022
PROJECT NO:	M22044
CAD DWG FILE:	
DRAWN BY:	Author
CHK'D BY:	Checker

RFP

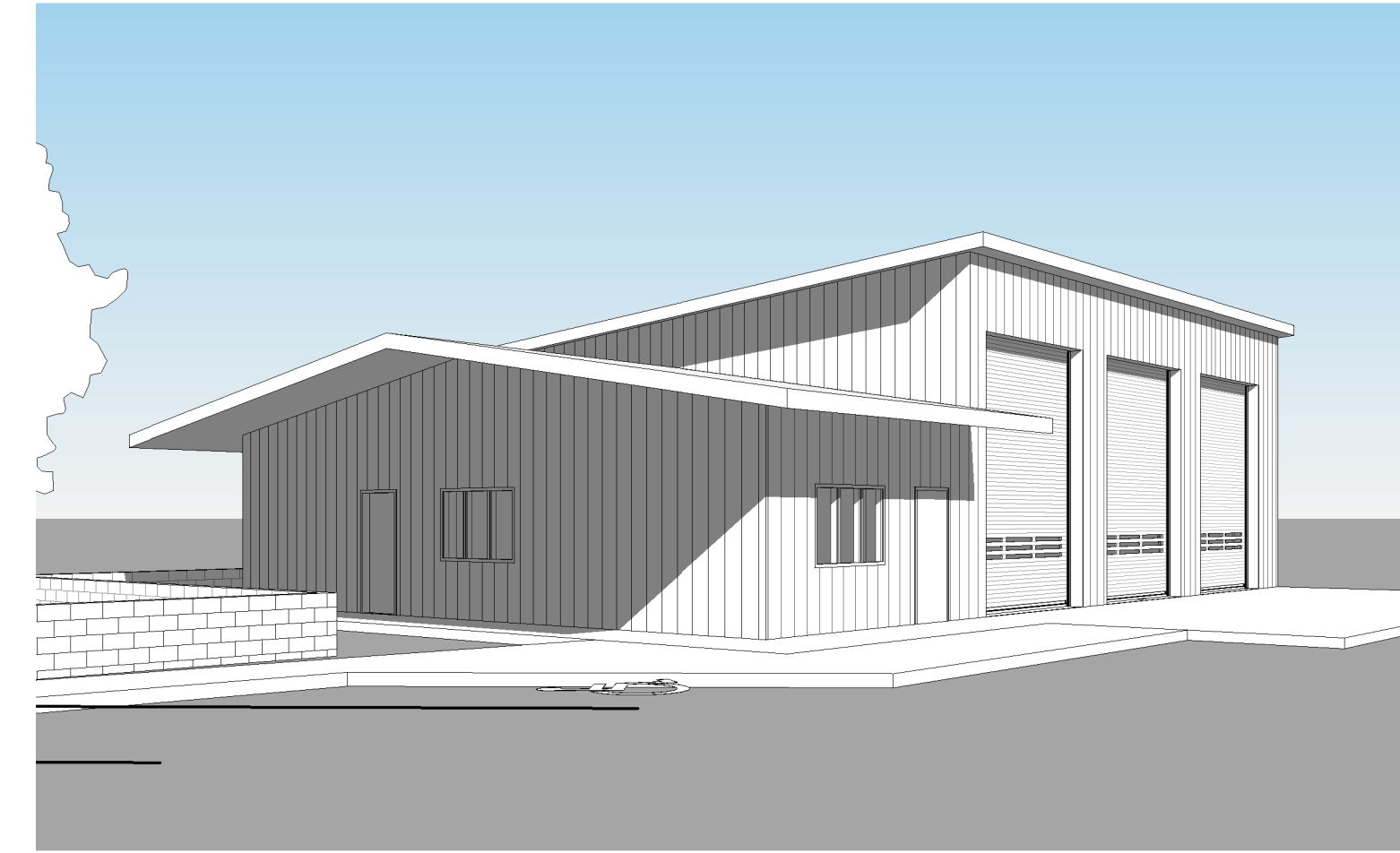
1 June 2022

SHEET TITLE

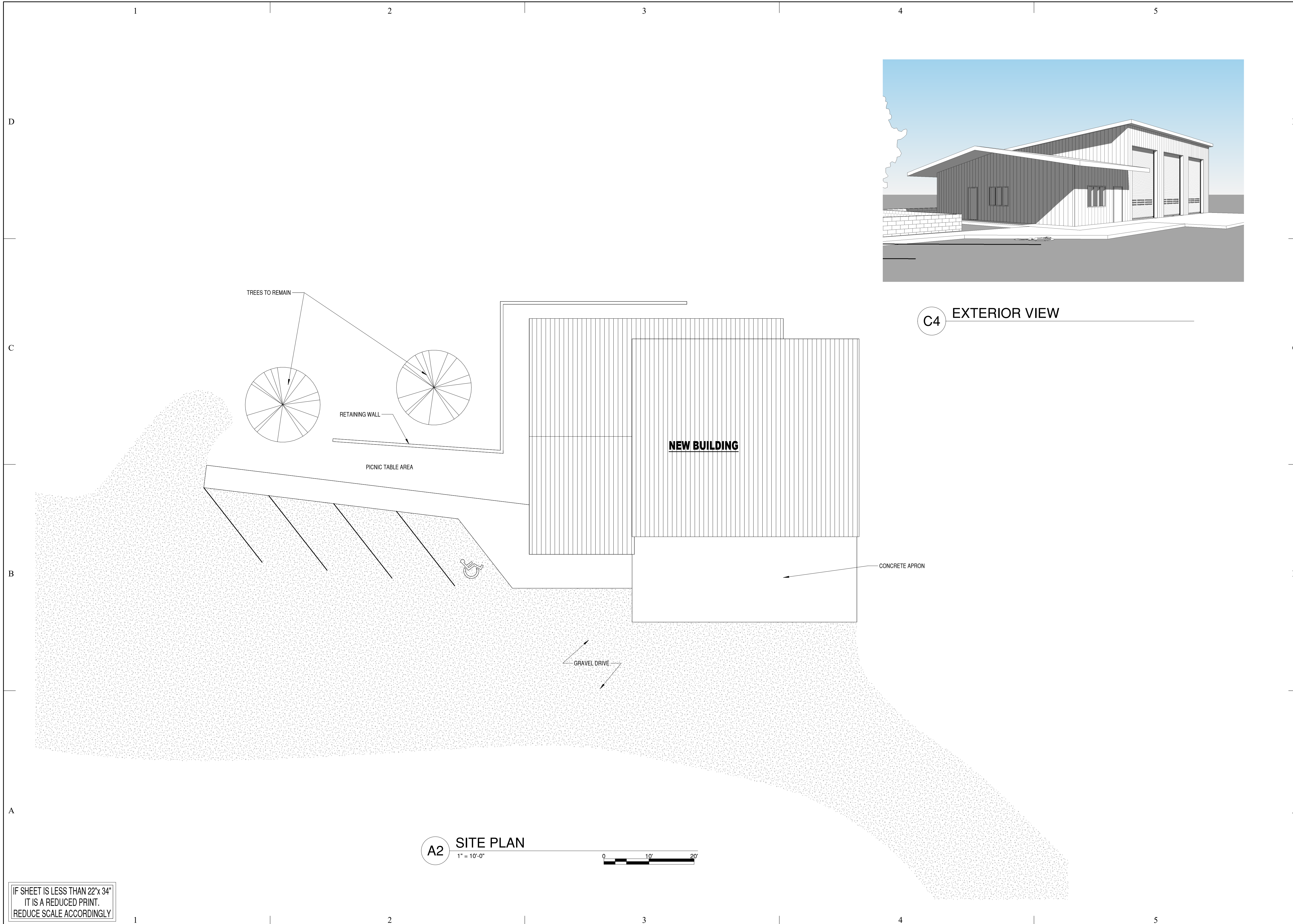
SITE PLAN

SHEET NO:

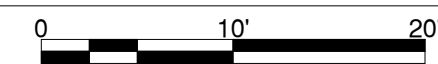
C101



C4 EXTERIOR VIEW



A2 SITE PLAN
1" = 10'-0"



IF SHEET IS LESS THAN 22"x 34"
IT IS A REDUCED PRINT.
REDUCE SCALE ACCORDINGLY

6/1/2022 2:53:12 AM