

Case, Lowe & Hart, Inc. • 2484 Washington Blvd.
Suite 510 • Ogden, Utah 84401-2346
801-399-5821 • www.clhae.com

CONSULTANTS

STAMP



BLM Pumphouse River
Operations Facility
Kremmling Field Office, Colorado

MARK	DATE	DESCRIPTION

ISSUE DATE:	6/1/2022
PROJECT NO:	M22044
CAD DWG FILE:	
DRAWN BY:	Author
CHK'D BY:	Checker

RFP

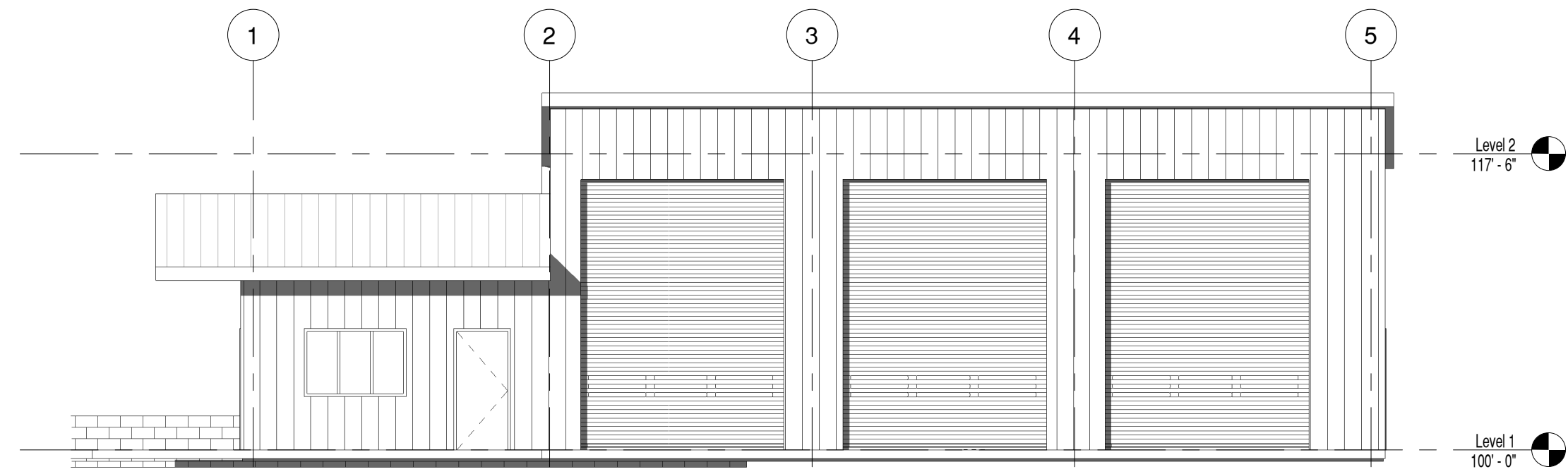
1 June 2022

SHEET TITLE

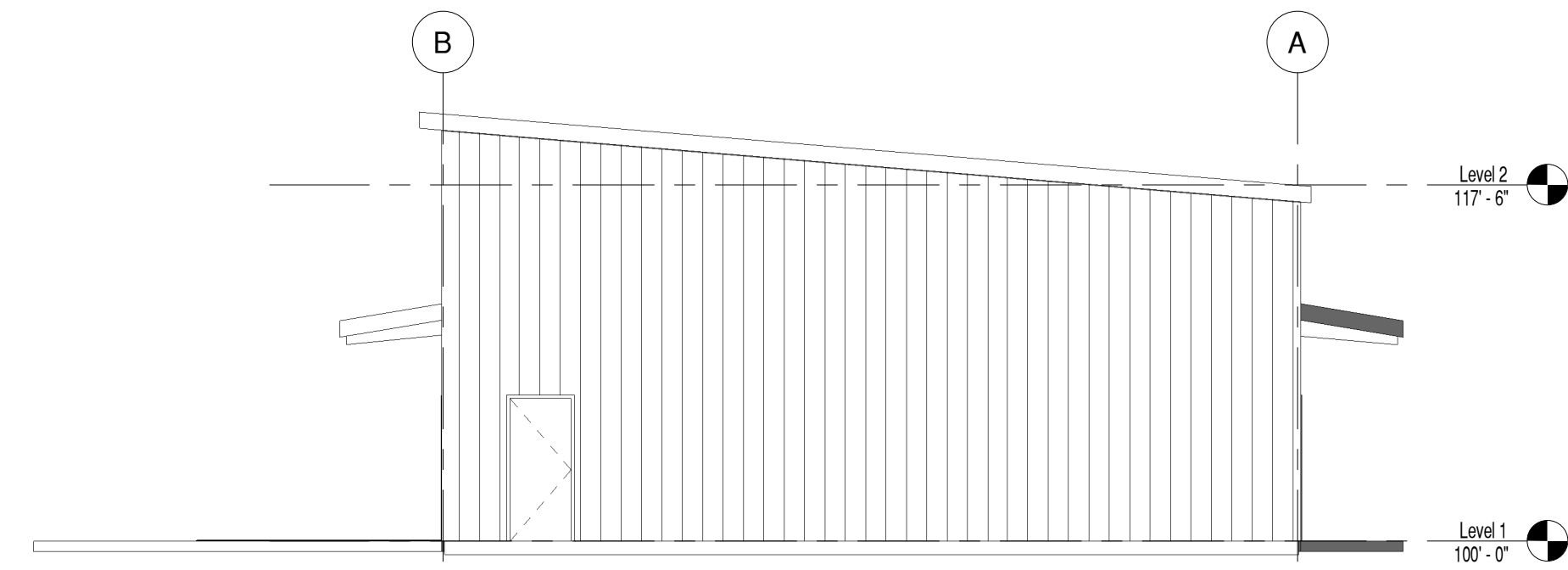
EXTERIOR
ELEVATIONS

SHEET NO:

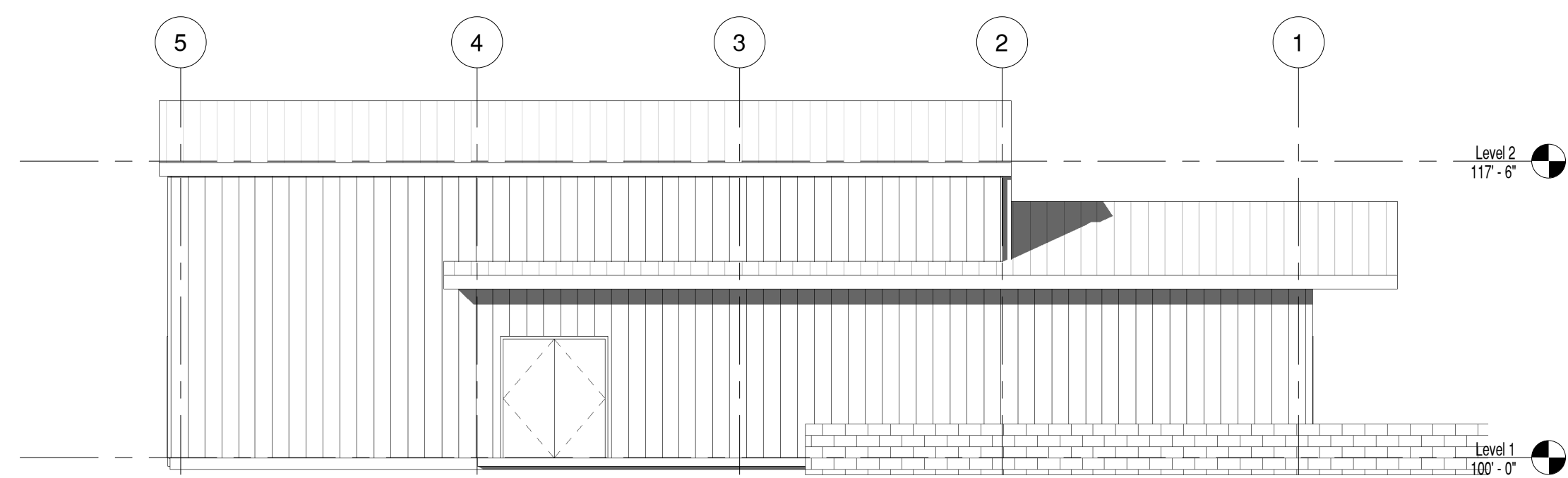
A201



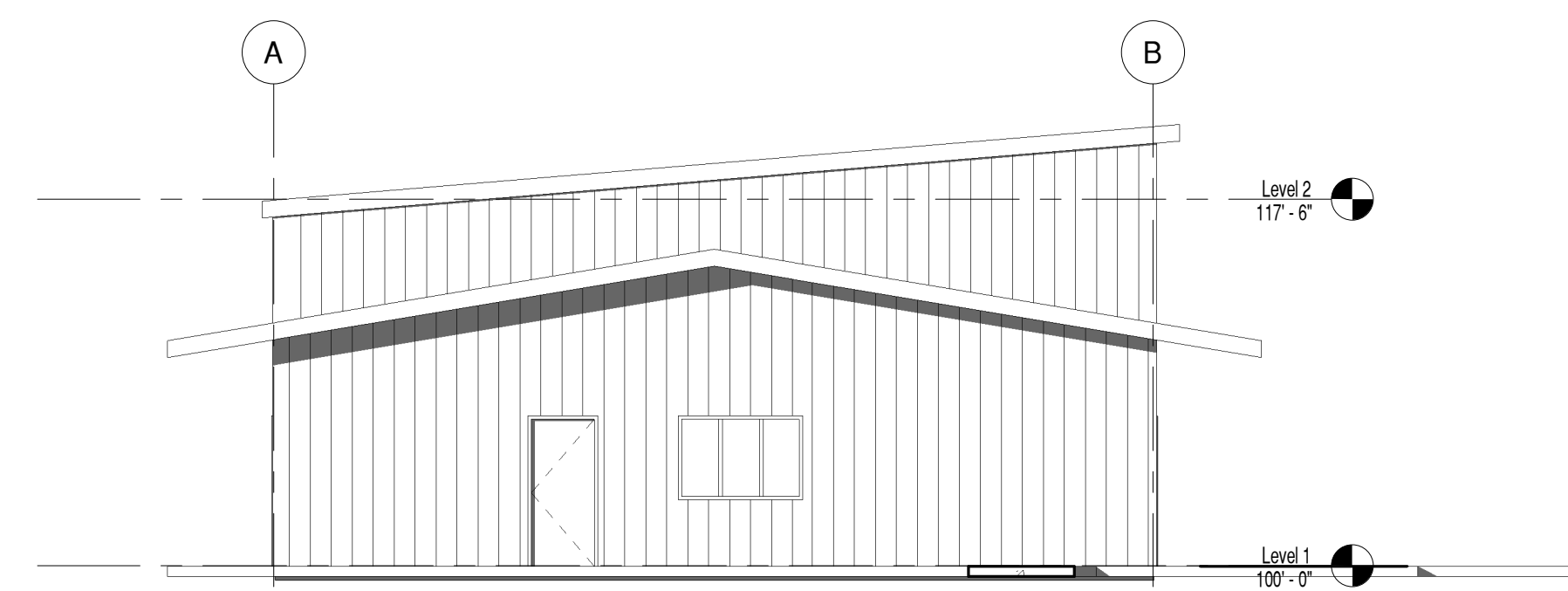
C1 South
1/8" = 1'-0"
0 4' 8' 16'



C4 East
1/8" = 1'-0"
0 4' 8' 16'



A1 North
1/8" = 1'-0"
0 4' 8' 16'



A4 West
1/8" = 1'-0"
0 4' 8' 16'

IF SHEET IS LESS THAN 22"x 34"
IT IS A REDUCED PRINT.
REDUCE SCALE ACCORDINGLY

6/1/2022 2:52:43 AM