

Case, Lowe & Hart, Inc. • 2484 Washington Blvd.
Suite 510 • Ogden, Utah 84401-2346
801-399-5821 • www.clhae.com

CONSULTANTS

STAMP



BLM Pumphouse River
Operations Facility
Kremmling Field Office, Colorado

| MARK | DATE | DESCRIPTION |
|------|------|-------------|
| | | |

| | |
|---------------|----------|
| ISSUE DATE: | 6/1/2022 |
| PROJECT NO: | M22044 |
| CAD DWG FILE: | |
| DRAWN BY: | Author |
| CHK'D BY: | Checker |

RFP

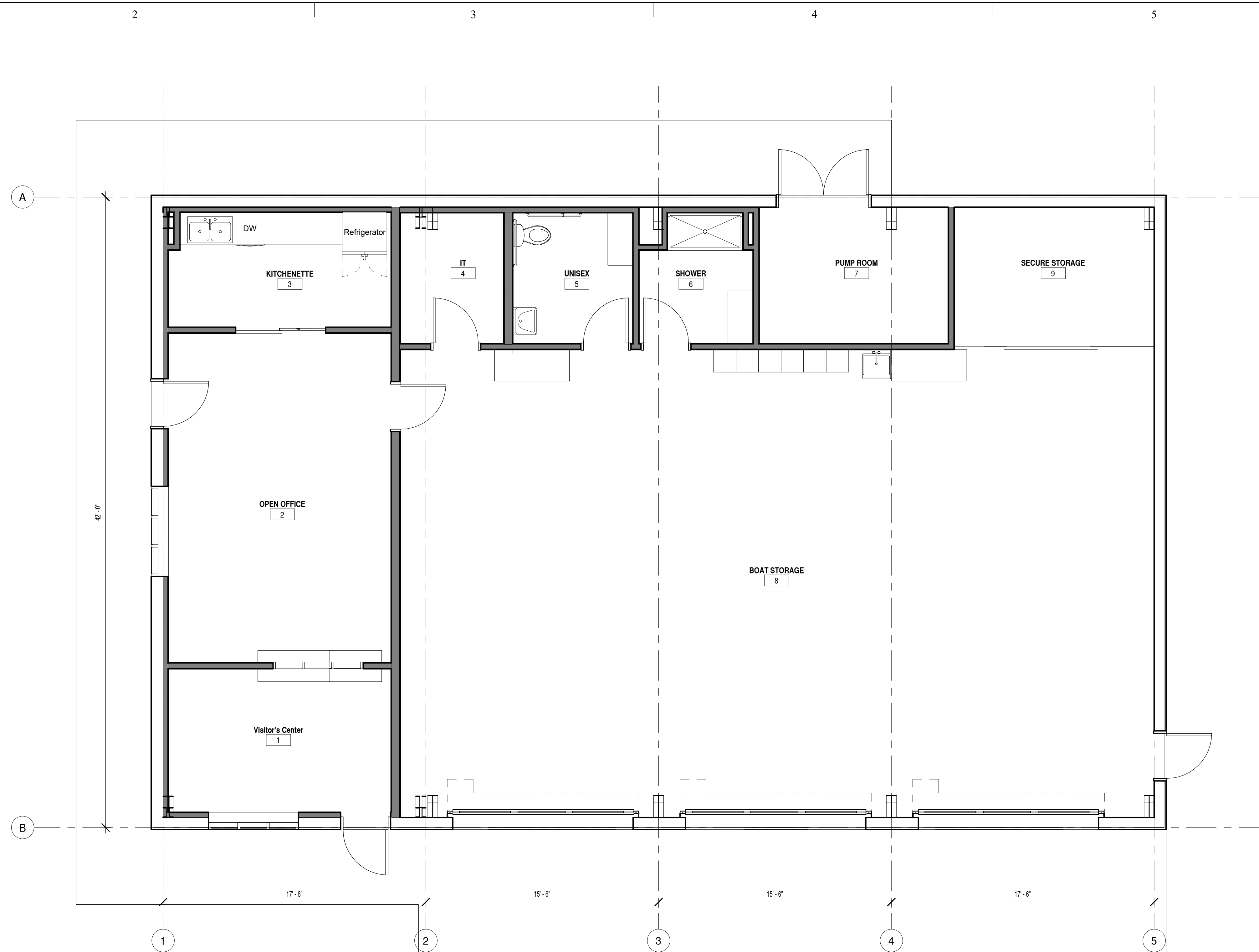
1 June 2022

SHEET TITLE

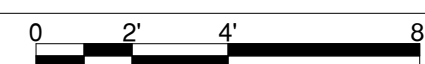
FLOOR PLAN

SHEET NO:

A101



A3 FLOOR PLAN
1/4" = 1'-0"



IF SHEET IS LESS THAN 22"x 34"
IT IS A REDUCED PRINT.
REDUCE SCALE ACCORDINGLY

6/1/2022 3:00:24 AM