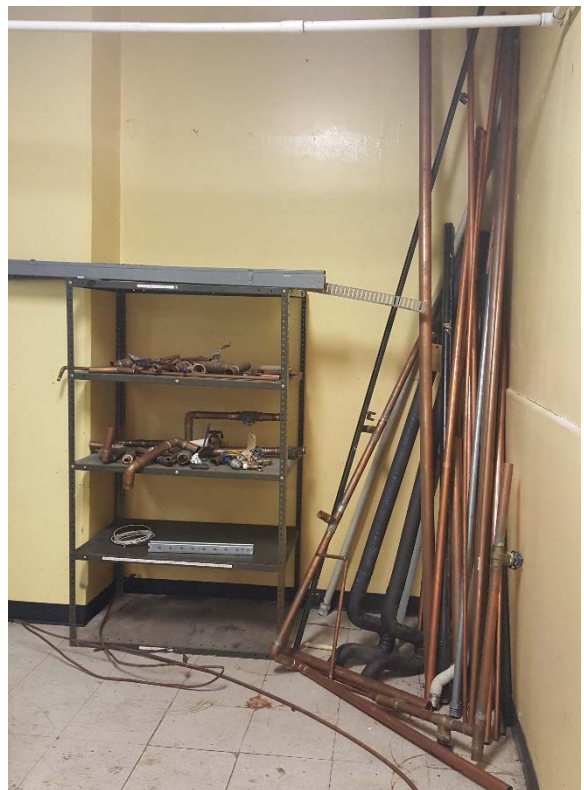


FURNITURE, ETC. TO BE MOVED

| Chiller Room | | |
|--------------|--|-------------------|
| QTY | Item | Size (w"x d"x h") |
| 1 | Trash can | 18x18x36 |
| 1 | Flammable rags can | 20x20x24 |
| 1 | Flammable storage cabinet | 12x43x45 |
| 1 | Welding cart (on wheels) | 18x27x45 |
| 1 | Engine Puller (on wheels) | - |
| 1 | Portable pipe/conduit stand | - |
| 1 | Circuit Breaker Testing Cart (on wheels) | 26x47x46 |
| 3 | Palletized spare circuit breakers | - |
| 2 | Pallet jacks | - |
| 1 | Portable spill containment tray | - |
| 1 | Battery charger cart (on wheels) | - |
| 1 | Parts shelf | 36x24x71 |
| 2 | Parts shelf | 36x24x87 |
| 1 | Parts shelf | 36x24x66 |
| lot | Assorted pipe and long stock | - |
| 1 | Portable steps | 22x42x27 |
| 2 | Compressed gas tanks – Nitrogen | - |
| 1 | Tool box (on wheels) | 27x14x45 |
| lot | 10 < Smalls < 20 | - |



Chiller Room



| Boiler Room | | |
|-------------|---------------------------------------|-------------------|
| QTY | Item | Size (w"x d"x h") |
| 2 | Portable fan | - |
| 1 | Ladder | - |
| 3 | Rag Cans | 20 x 20 x 24 |
| 1 | Rag Can | 13 x 13 x 15 |
| 1 | Portable Light Stand | - |
| 2 | Chair | - |
| 1 | Table – no drawers | 24 x 48 x 29 |
| 2 | Parts Cart (on wheels) | 24 x 38 x 37 |
| 2 | Parts Cart (on wheels) | 18 x 32 x 36 |
| 1 | Parts Cart (on wheels) w/ tool box | 18 x 34 x 37 |
| 1 | Wire spool rack (on wheels) | 15 x 27 x 39 |
| 3 | Parts cabinet | 18 x 36 x 78 |
| 5 | Parts cabinet | 18 x 48 x 78 |
| 4 | Parts cabinet – built for pallet jack | 28 x 30 x 59 |
| 1 | Parts bin | 18 x 36 x 87 |
| 1 | Parts bin | 18 x 36 x 66 |
| 1 | Work bench w/ drawers | 28 x 60 x 35 |
| 1 | Cabinet w/ drawers | 30 x 30 x 25 |
| 2 | Cabinet w/ drawers | 10 x 39 x 34 |
| lot | 15 < Smalls < 25 | - |



Boiler Room



Boiler Room



| Ramp & Vestibule | | |
|------------------|------------------------|-------------------|
| QTY | ITEM | Size (w"x d"x h") |
| 1 | Job Box | 61 x 31 x 55 |
| 1 | Parts Cart (on wheels) | 26 x 40 x 32 |
| 1 | Parts Cart (on wheels) | 27 x 48 x 41 |
| 1 | Storage Shelf | 24 x 36 x 48 |
| 1 | Bookcase | 13 x 33 x 45 |
| 2 | Lockers | 15 x 21 x 78 |
| 1 | desk | 23 x 36 x 29 |
| 1 | Drawer Pedestal | 15 x 20 x 45 |
| 1 | File Cabinet | 15 x 28 x 60 |
| 1 | File Cabinet | 15 x 28 x 31 |
| 3 | File Cabinet | 18 x 28 x 60 |
| lot | 10 < Smalls < 20 | - |

