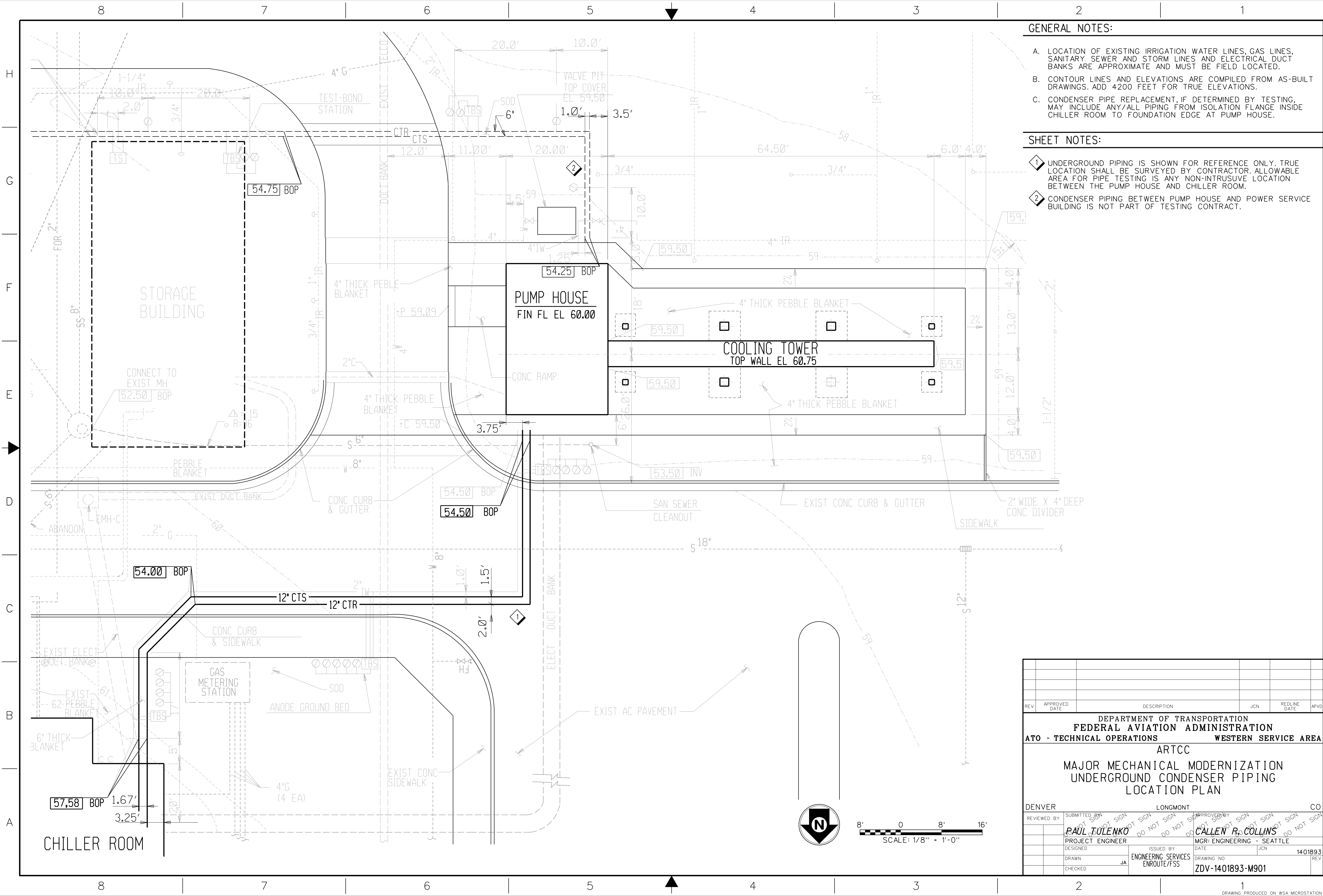


2024-10-08 09:33:00
10/19/2024 11:23:31 AM
John CTE Allen



GENERAL NOTES:

- A. LOCATION OF EXISTING IRRIGATION WATER LINES, GAS LINES, SANITARY SEWER AND STORM LINES AND ELECTRICAL DUCT BANKS ARE APPROXIMATE AND MUST BE FIELD LOCATED.
- B. CONTOUR LINES AND ELEVATIONS ARE COMPILED FROM AS-BUILT DRAWINGS. ADD 4200 FEET FOR TRUE ELEVATIONS.
- C. CONDENSER PIPE REPLACEMENT, IF DETERMINED BY TESTING, MAY INCLUDE ANY/ALL PIPING FROM ISOLATION FLANGE INSIDE CHILLER ROOM TO FOUNDATION EDGE AT PUMP HOUSE.

SHEET NOTES:

- 1 UNDERGROUND PIPING IS SHOWN FOR REFERENCE ONLY. TRUE LOCATION SHALL BE SURVEYED BY CONTRACTOR. ALLOWABLE AREA FOR PIPE TESTING IS ANY NON-INTRUSIVE LOCATION BETWEEN THE PUMP HOUSE AND CHILLER ROOM.
- 2 CONDENSER PIPING BETWEEN PUMP HOUSE AND POWER SERVICE BUILDING IS NOT PART OF TESTING CONTRACT.

REV	APPROVED DATE	DESCRIPTION				JCN	REDLINE DATE	APVD
DEPARTMENT OF TRANSPORTATION FEDERAL AVIATION ADMINISTRATION ATO - TECHNICAL OPERATIONS WESTERN SERVICE AREA								
ARTCC								
MAJOR MECHANICAL MODERNIZATION UNDERGROUND CONDENSER PIPING LOCATION PLAN								
DENVER			LONGMONT			CO		
REVIEWED BY	SUBMITTED BY		APPROVED BY		DO NOT SIGN			
	PAUL TULENKO		CALLEN R. COLLINS		DO NOT SIGN			
PROJECT ENGINEER			MGR: ENGINEERING - SEATTLE					
DESIGNED			ISSUED BY		DATE	JCN	1401893	
DRAWN			ENGINEERING SERVICES		DRAWING NO		REV	
CHECKED			ENROUTE/FSS		ZDV-1401893-M901			

ISSUED FOR:
A